

MIDJ



Tavolo Armando H.110

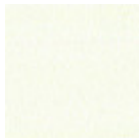
design Balutto Associati, 2011

Tavolo Armando fisso con struttura e piano in metallo verniciato.
Disponibile in diverse dimensioni con altezza 110 cm.

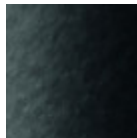
Sono disponibili anche le versioni altezza 76 cm.

Colori e materiali

Struttura



Metallo bianco

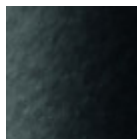


Metallo nero

Piano



Metallo bianco



Metallo nero

Dimensioni



	A (cm)	B (cm)	C (cm)
	(inch)	(inch)	(inch)
H.110 80X80	110	80	80
(cm)	43.3	31.5	31.5
(inch)			
H.110 90X90	110	90	90
(cm)	43.3	35.4	35.4
(inch)			
H.110 160X90	110	160	90
(cm)	43.3	63	35.4
(inch)			
H.110	110	200	100
200X100 (cm)	43.3	78.7	39.4
(inch)			

	A (cm)	B (cm)	C (cm)
	(inch)	(inch)	(inch)
H.110	110	280	100
280X100 (cm)	43.3	110.2	39.4
(inch)			

Dati volumetrici

Peso 103 Kg

Volume 0.42 mc

Colli 2