

MIDJ

Coffee table **Trampoliere** **H34 ø70**

design Roberto Paoli, 2013

Coffee table Trampoliere con base a tre razze in metallo verniciato. Top in melaminico o HPL.

Disponibile in tre diverse varianti: H34 con Ø70, H44 con Ø60, H54 con Ø50.



Colori e materiali

Struttura



Metallo bianco



Metallo nero



Metallo corda



Metallo Marrone



Metallo grafite



Metallo giallo pastello



Metallo azzurro



Metallo blu oceano



Metallo Bronzo



Metallo fango



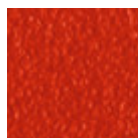
Metallo grigio chiaro



Metallo ocra



Metallo rosa cipria

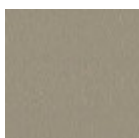


Metallo rosso



Metallo verde salvia

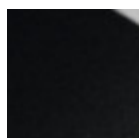
Piano



Melaminico
4 Colori



Hpl bianco bordo
nero



Hpl nero



Hpl grigio cemento

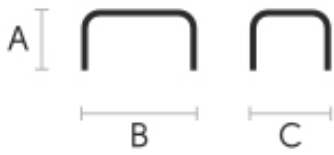


Hpl corten



Hpl bianco bordo
bianco

Dimensioni



Dati volumetrici

Peso 15.5 Kg

Volume 0.2 mc

Colli 2

	A (cm) <small>(inch)</small>	B (cm) <small>(inch)</small>	C (cm) <small>(inch)</small>
Trampoliere H34 (cm) <small>(inch)</small>	34 13.4	70 27.6	70 27.6
Trampoliere H44 (cm) <small>(inch)</small>	44 17.3	60 23.6	60 23.6
Trampoliere H54 (cm) <small>(inch)</small>	54 21.3	50 19.7	50 19.7