



Poltroncina **Ola P M**

design Paolo Vernier, 2016

Poltrona Ola con struttura e sedile in metallo verniciato adatta ad uso outdoor.

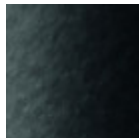
La poltrona Ola è impilabile fino a quattro unità.

Colori e materiali

Struttura



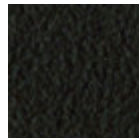
Metallo bianco



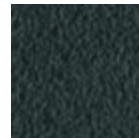
Metallo nero



Metallo corda



Metallo Marrone



Metallo grafite



Metallo giallo pastello



Metallo azzurro



Metallo blu oceano



Metallo Bronzo



Metallo fango



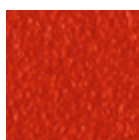
Metallo grigio chiaro



Metallo ocra



Metallo rosa cipria

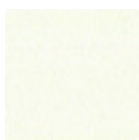


Metallo rosso

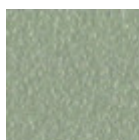


Metallo verde salvia

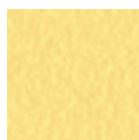
Rivestimento



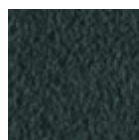
Metallo bianco



Metallo corda



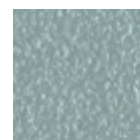
Metallo giallo pastello



Metallo grafite



Metallo nero



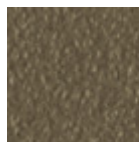
Metallo azzurro



Metallo blu oceano



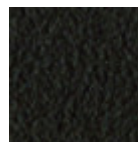
Metallo Bronzo



Metallo fango



Metallo grigio chiaro



Metallo Marrone



Metallo ocra



Metallo rosa cipria

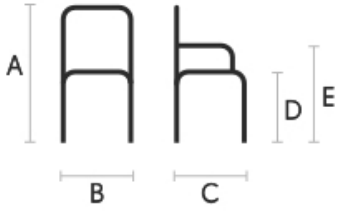


Metallo rosso



Metallo verde salvia

Dimensioni



	cm	inch
A	82	32.3
B	52	20.5
C	54	21.3
D	45	17.7
E	65	25.6

Dati volumetrici

Peso 7.25 Kg
Volume 0.32 mc
Colli 1