

Coffee table **Walter**

Walter coffee table con base a quattro gambe in acciaio verniciato o cromato. Piano in acciaio o ceramica.

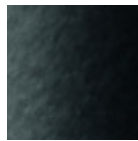


Colori e materiali

Struttura



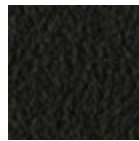
Acciaio Bianco



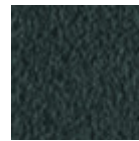
Acciaio Nero



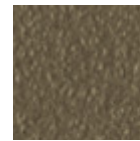
Acciaio Corda



Acciaio Marrone



Acciaio Grafite



Acciaio Fango



Acciaio Bronzo



Acciaio Giallo
Pastello



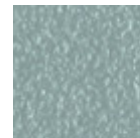
Acciaio Ocre



Acciaio rosso



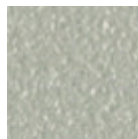
Acciaio Verde Salvia



Acciaio Azzurro



Acciaio Blu Oceano



Acciaio Grigio
Chiaro



Acciaio Rosa Cipria



Cromato

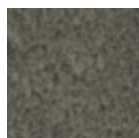
Rivestimento



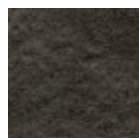
Satinato



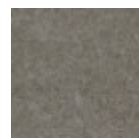
Inox Lucido



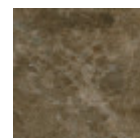
Ceramica Piombo



Ceramica Savoia
Antracite



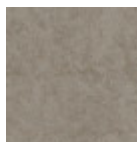
Ceramica Savoia
Cemento



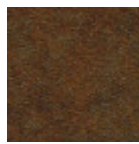
Ceramica Marmo
Emperador



Ceramica Oxide Bianco



Ceramica Oxide Corda

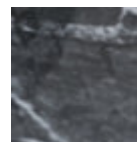


Ceramica Corten

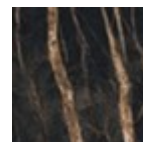


Ceramica marmo calacatta

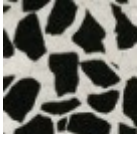
1 colore



Ceramica marmo nero greco lucido

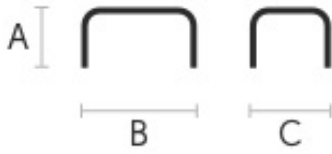


Ceramica marmo noir desir lucido



Ceramica lucida veneziana

Dimensioni



Dati volumetrici

Peso 9 Kg

Volume 0.12 mc

Colli 1

	A (cm)	B (cm)	C (cm)
	(inch)	(inch)	(inch)
40x40	50	40	40
(cm)	19.7	15.7	15.7
(inch)			
60x40	50	60	40
(cm)	19.7	23.6	15.7
(inch)			