



Tavolo allungabile **More**

Tavolo allungabile con struttura in acciaio verniciato e gambe rivestite in legno. Top disponibile in melaminico, laccato, Fenix, cristallo o cristalceramica.

Per le versioni 140x90 disponibile top in impiallacciato tinto noce fiammato.



Colori e materiali

Struttura



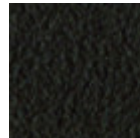
Acciaio Bianco



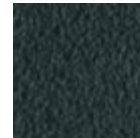
Acciaio Nero



Acciaio Corda

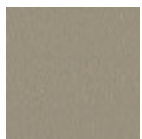


Acciaio Marrone

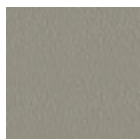


Acciaio Grafite

Rivestimento



Melaminico
8 Colori



MDF Laccato
5 Colori



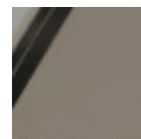
Fenix Bianco



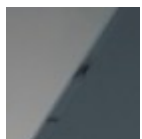
Fenix Nero



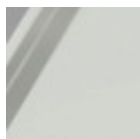
Impiallacciato Noce
Fiammato



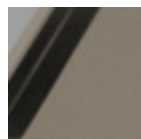
Cristallo Lucido
Corda



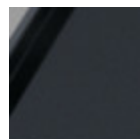
Vetro Lucido Fumè



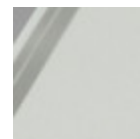
Cristallo Lucido
Extrachiaro Bianco



Cristallo Satinato
Antigraffio Corda



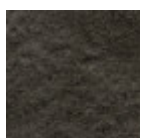
Cristallo Satinato
Antigraffio Grafite



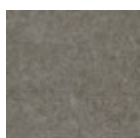
Cristallo Satinato
Antigraffio
Extrachiaro Bianco



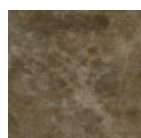
Cristalceramica
Piombo



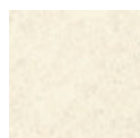
Cristalceramica
Savoia Antracite



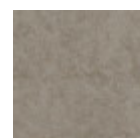
Cristalceramica
Savoia Cemento



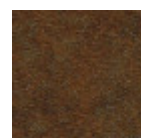
Cristalceramica
Marmo Emperor



Cristalceramica
Oxide Bianco



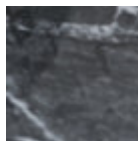
Cristalceramica
Oxide Corda



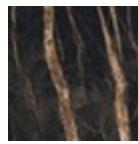
Cristalceramica
Corten



**Cristalceramica
marmo calacatta**



**Cristalceramica
Marmo Greco Nero
Lucido**



**Cristalceramica
Marmo Noir Desir**



**Cristalceramica
veneziano**

Allunghe



Melaminico
8 Colori



MDF LAccato
5 Colori



Fenix Bianco

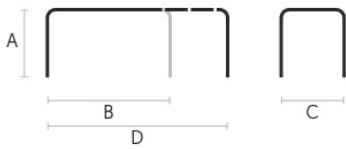


Fenix Nero



**Impiallacciato Noce
Fiammato**

Dimensioni



	A (cm) (inch)	B (cm) (inch)	C (cm) (inch)	D (cm) (inch)
100x70 (cm) (inch)	75 29.5	100 39.4	70 27.6	140 55.1
120x80 (cm) (inch)	75 29.5	120 47.2	80 31.5	170 66.9
140x90 (cm) (inch)	75 29.5	140 55.1	90 35.4	200 78.7
L 140x90 (cm) (inch)	75 29.5	140 55.1	90 35.4	230 90.6
XL 110x80 (cm) (inch)	75 29.5	110 43.3	80 31.5	245 96.5
XL 140x90 (cm) (inch)	75 29.5	140 55.1	90 35.4	290 114.2

Dati volumetrici

Peso 66 Kg
Volume 0.27 mc
Colli 4