

Tavolo Infinity

Tavolo con colonna centrale in acciaio cromato o verniciato. Piano in vetro, melaminico o cristalceramica disponibile in diverse misure.

Versione con top ø120 bisponibile solo in melaminico, cristallo e cristalceramica marmo calacatta.



Colori e materiali

Struttura



Acciaio Bianco



Acciaio Nero



Acciaio Corda



Acciaio Marrone

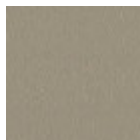


Acciaio Grafite

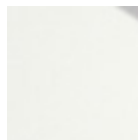


Cromato

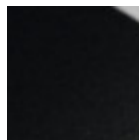
Rivestimento



Melaminico
8 Colori



Hpl bianco bordo
nero



Hpl nero



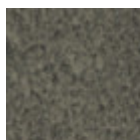
Hpl Cemento



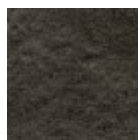
Hpl Corten



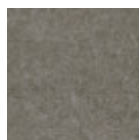
Cristallo trasparente



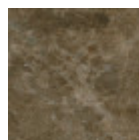
Cristalceramica
Piombo



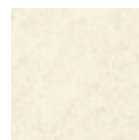
Cristalceramica
Savoia Antracite



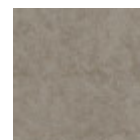
Cristalceramica
Savoia Cemento



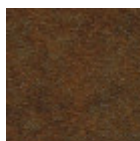
Cristalceramica
Marmo Emperador



Cristalceramica
Oxide Bianco



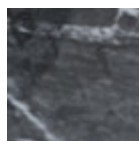
Cristalceramica
Oxide Corda



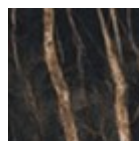
Cristalceramica
Corten



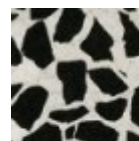
Cristalceramica
marmo calacatta



Cristalceramica
Marmo Greco Nero
Lucido



Cristalceramica
Marmo Noir Desir



Cristalceramica
veneziano

Dimensioni



Dati volumetrici

Peso 44 Kg

Volume 0.25 mc

Colli 2

	A (cm)	B (cm)	C (cm)
	(inch)	(inch)	(inch)
ø60 (cm)	76	60	60
(inch)	29.9	23.6	23.6
ø70 (cm)	76	70	70
(inch)	29.9	27.6	27.6
ø80 (cm)	76	80	80
(inch)	29.9	31.5	31.5
ø100 (cm)	76	100	100
(inch)	29.9	39.4	39.4
ø120 (cm)	76	120	120
(inch)	29.9	47.2	47.2