

MIDJ



Poltrona lounge **Ola** **Bench BN M**

design Paolo Vernier, 2016

Panca Ola a due posti in metallo verniciato.

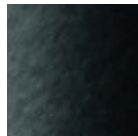
Adatta ad uso esterno e impilabile fino a quattro unità.

Colori e materiali

Struttura



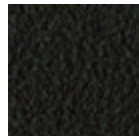
Metallo bianco



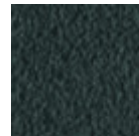
Metallo nero



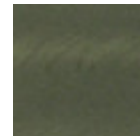
Metallo corda



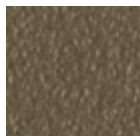
Metallo Marrone



Metallo grafite



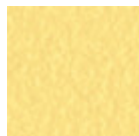
Metallo Industrial



Metallo fango



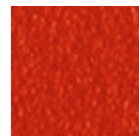
Metallo Bronzo



Metallo giallo
pastello



Metallo ocre



Metallo rosso



Metallo verde salvia



Metallo azzurro



Metallo blu oceano

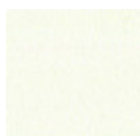


Metallo grigio chiaro

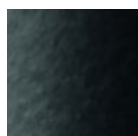


Metallo rosa cipria

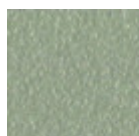
Rivestimento



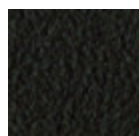
Metallo bianco



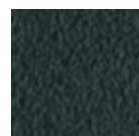
Metallo nero



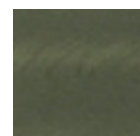
Metallo corda



Metallo Marrone



Metallo grafite



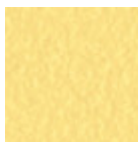
Metallo Industrial



Metallo fango



Metallo Bronzo



**Metallo giallo
pastello**



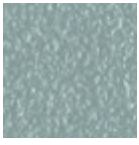
Metallo ocra



Metallo rosso



Metallo verde salvia



Metallo azzurro



Metallo blu oceano



Metallo grigio chiaro



Metallo rosa cipria

Dimensioni



A	B	C	D	E
(cm)	(cm)	(cm)	(cm)	(cm)
(inch)	(inch)	(inch)	(inch)	(inch)
82	114	56	46	65
32.3	44.9	22.1	18.1	25.6

Dati volumetrici

Peso 14 Kg

Volume 0.56 mc

Colli 1