

MIDJ



Sgabello Trampoliere OUT H65 / H75

design Roberto Paoli, 2013

Lo sgabello Trampoliere con base a quattro gambe in acciaio verniciato è disponibile in due diverse altezze H65 cm (25.6 in) e H75 cm (29.5 in).

Impilabile fino a quattro unità, è adatto ad uso esterno.

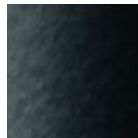
Opzionale: cuscino removibile per sedile e schienale tappezzato a righe in pelle, similpelle, tessuto.

Colori e materiali

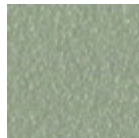
Struttura



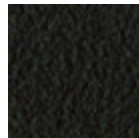
Metallo bianco



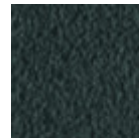
Metallo nero



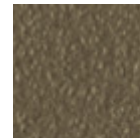
Metallo corda



Metallo Marrone



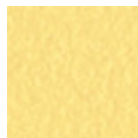
Metallo grafite



Metallo fango



Metallo Bronzo



Metallo giallo
pastello



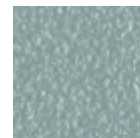
Metallo ocre



Metallo rosso



Metallo verde salvia



Metallo azzurro



Metallo blu oceano

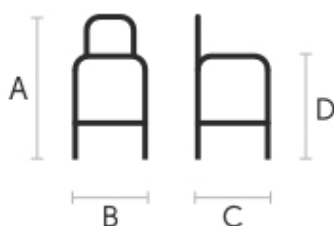


Metallo grigio chiaro



Metallo rosa cipria

Dimensioni



A	B	C
(cm)	(cm)	(cm)
(inch)	(inch)	(inch)

H65	76	46	42	65
(cm)	29.9	18.1	16.5	25.6
(inch)				
H75	86	46	42	75
(cm)	33.9	18.1	16.5	29.5
(inch)				

Dati volumetrici

Peso 8.1 Kg

Volume 0.20 mc

Colli 1