

MIDJ
INITALY

Poltroncina **Strike P**

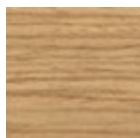
design AtelierNanni, 2017

Poltrona con struttura in legno. Schienale in acciaio verniciato.



Colori e materiali

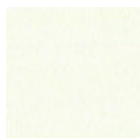
Struttura



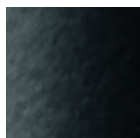
Frassino tinto

8 Colori

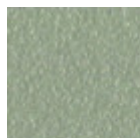
Rivestimento



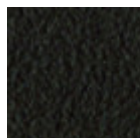
Acciaio Bianco



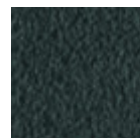
Acciaio Nero



Acciaio Corda



Acciaio Marrone



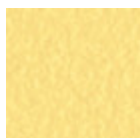
Acciaio Grafite



Acciaio Fango



Acciaio Bronzo



**Acciaio Giallo
Pastello**



Acciaio Ocra



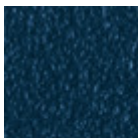
Acciaio rosso



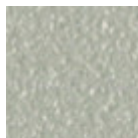
Acciaio Verde Salvia



Acciaio Azzurro



Acciaio Blu Oceano



Acciaio Grigio Chiaro



Acciaio Rosa Cipria

Dimensioni



	cm	inch
A	79	31.1
B	54	21.3
C	50	19.7
E	64	25.2
D	46	18.1

Download

3D Strike P (zip) - <https://www.midj.com/images/uploads/resources/strike-p-3d.zip>