

Sedia Strike S

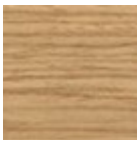
design AtelierNanni, 2017

Sedia con struttura in legno e schienale in acciaio verniciato.



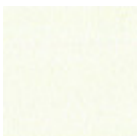
Colori e materiali

Struttura



Frassino tinto
8 Colori

Rivestimento



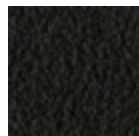
Acciaio Bianco



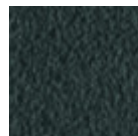
Acciaio Nero



Acciaio Corda



Acciaio Marrone



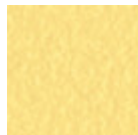
Acciaio Grafite



Acciaio Fango



Acciaio Bronzo



Acciaio Giallo
Pastello



Acciaio Ocre



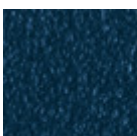
Acciaio rosso



Acciaio Verde Salvia



Acciaio Azzurro



Acciaio Blu Oceano

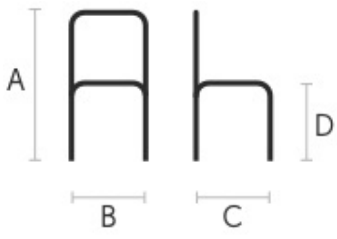


Acciaio Grigio
Chiaro



Acciaio Rosa Cipria

Dimensioni



	cm	inch
A	79	31.1
B	48	48.9
C	50	19.7
D	46	18.1

Download

[3D Strike S \(zip\)](https://www.midj.com/images/uploads/resources/strike-s-3d.zip) - <https://www.midj.com/images/uploads/resources/strike-s-3d.zip>