

MIDJ



Table bistro **Plissé H103**

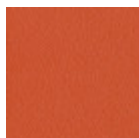
design Paola Navone, 2022

Table bistrot en métal, il peut être utilisé à l'intérieure et en extérieure, combinée avec des plateaux ronds.

De la collaboration avec Paola Navone naît Plissé, une collection de tables à la présence sculpturale et élégante, mais aussi légère et informelle. De manière un peu ironique, Plissé rend hommage au monde de la mode et à l'icône travail plissé, tellement en vogue dans les années 50 et 60, et toujours à la mode aujourd'hui.

Couleurs et matériaux

Structure



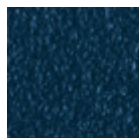
Métal orange papaya



Métal bleu ciel



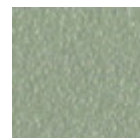
Metal blanc



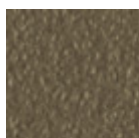
Métal bleu ocean



Métal bronze



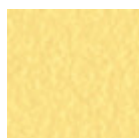
Metal corde



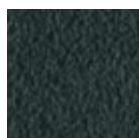
Métal fango



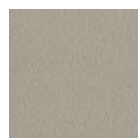
Métal jaune doré



Métal jaune pastel



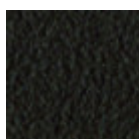
Métal graphite



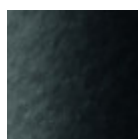
Métal gris cendre



Métal gris claire



Métal marron



Metal noir



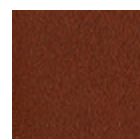
Métal ocre



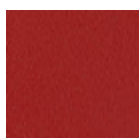
Métal rose poudre



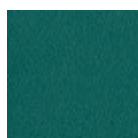
Métal rosso



Métal rouge bulgare



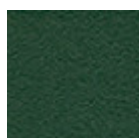
Métal rouge cerise



Métal vert pin

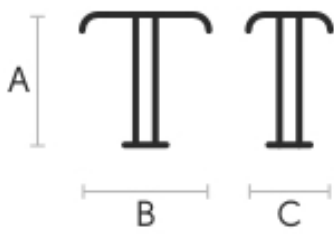


Métal vert sauge



Metal vert foncé

Dimensions



	cm	inch
A	105	41,3
B	45	17,7
C	45	17,7

Certifications matériaux

Metal vert foncé

The technologies used in the previous phase of powder coating play a fundamental role in the final result of the processing. They are in fact essential to increase adherence paint on the metal surface and then guarantee its duration over time. The metal frames, following a total cleaning of the surface, pass through chemical conversion processes, creating a compact base that allows for better adhesion of the subsequent treatment. In the last phase the object subjected to the powder coating process is placed in a polymerization oven, going to form an adherent and extremely tight layer durable. This particular paint job is ideal for outdoor use.

To clean the surface, use a damp microfiber cloth with neutral soap or specific metal cleaning products. Avoid hitting or rubbing the surface with sharp objects. Do not use scourers or other abrasive materials, since they would inevitably scratch the surface. Do not leave rusty iron objects on the surface for too long.

These surface treatments are not suitable for outdoor use, but they guarantee excellent resistance to frequent use, dirt and dust.