

MIDJ



Tabouret **Calla P SG** **PP_TS**

design Fabrizio Batoni, 2019

Calla tabouret avec piètement en metal pivotante et réglable en hauteur.
Assise en polypropylène avec coussin fixe coussin en tissu, cuir ou
simili cuir.

Couleurs et matériaux

Structure



Métal orange papaya



Métal bleu ciel



Metal blanc



Métal bleu ocean



Métal bronze



Metal corde



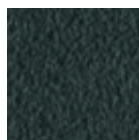
Métal fango



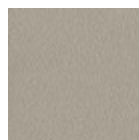
Métal jaune doré



Métal jaune pastel



Métal graphite



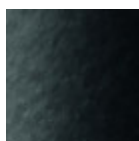
Métal gris cendre



Métal gris claire



Métal marron



Metal noir



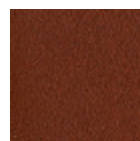
Métal ocre



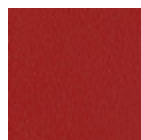
Métal rose poudre



Métal rosso



Métal rouge bulgare



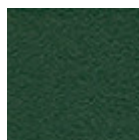
Métal rouge cerise



Métal vert pin



Métal vert sauge



Metal vert foncé

Revêtement

Polypropylène

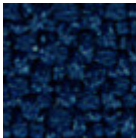
10 Couleurs

Dossier



Similicuir Secret

23 Couleurs



Tissu Mirage

15 Couleurs



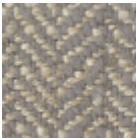
Tissu Cotton Club

14 Couleurs



Velours Superb

16 Couleurs



Tissu Second

11 Couleurs



Tissu Main Line Flax

16 Couleurs



Tissu Remix 3

19 Couleurs



Tissu Uniform Melange

7 Couleurs



Peau vintage

8 Couleurs



Similicuir Vintage

12 Couleurs



Tissu Fenix Wool

16 Couleurs



Tissu Novabuk

17 Couleurs



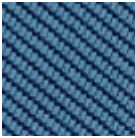
Tissu manhattan

13 Couleurs



Tissu Visual

13 Couleurs



Tissu Oceanic

13 Couleurs



Tissu Yoredale

14 Couleurs



Plein Fleur

21 Couleurs



Tissu Flame

7 Couleurs



Tissu Network

9 Couleurs



Tissu Ouche

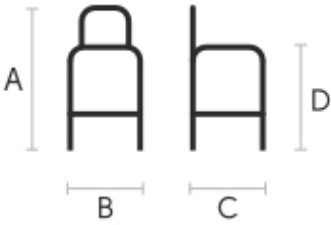
7 Couleurs



Tissu Plain

7 Couleurs

Dimensions



A (cm)	B (cm)	C (cm)	D (cm)	E (cm)
(inch)	(inch)	(inch)	(inch)	(inch)
98/113	52	54	65/80	89/104
38.6/44.5	20.5	21.3	25.6/31.5	35/40.9

Données volumétriques

Poids 17.4 Kg
Volume 0.30 mc
Colis 1

Certifications matériaux

Metal vert foncé

The technologies used in the previous phase of powder coating play a fundamental role in the final result of the processing. They are in fact essential to increase adherence paint on the metal surface and then guarantee its duration over time. The metal frames, following a total cleaning of the surface, pass through chemical conversion processes, creating a compact base that allows for better adhesion of the subsequent treatment. In the last phase the object subjected to the powder coating process is placed in a polymerization oven, going to form an adherent and extremely tight layer durable. This particular paint job is ideal for outdoor use.

To clean the surface, use a damp microfiber cloth with neutral soap or specific metal cleaning products. Avoid hitting or rubbing the surface with sharp objects. Do not use scourers or other abrasive materials,

since they would inevitably scratch the surface. Do not leave rusty iron objects on the surface for too long.

These surface treatments are not suitable for outdoor use, but they guarantee excellent resistance to frequent use, dirt and dust.

Certifications matériaux

Polypropylène

Polypropylene is a resistant, non-toxic, odorless, heat resistant and easy to clean plastic material. It is also suitable for outdoor use. Our polypropylene is a material reinforced with glass fiber: an option with excellent mechanical properties that allows the product to be solid and resistant. This material has a marked resistance to fading: a treatment with UV stabilizer and AS antistatic protection works to prolong the beauty of the product by slowing the fading process. However, by exposing the chair to the sun and atmospheric agents for very long periods, the color can undergo alterations. As a thermoplastic material, it is 100% recyclable.

CLEANING AND MAINTENANCE

Polypropylene seats are easy to clean, and do not require the use of specific products, except in the case of stubborn and hard to remove stains. For simple and effective cleaning, use a microfiber cloth soaked in water or a solution of water and neutral soap. In case of stubborn stains, it is possible to act directly on them with a neutral detergent, always with the help of a microfiber cloth. Then rinse with water. Avoid abrasive sponges, stain removers and granular cleaners that could scratch the surface. If using a chlorine-based cleaner, rinse and do not dry in direct sunlight.

These tips are cleaning recommendations and do not guarantee complete stain removal.

We recommend that you always test the cleaning method on a hidden part of the item to check the resistance of the material.