

# MIDJ

## Charlotte table

Lampe de table Charlotte à lumière directe. La structure et le diffuseur sont en métal noir et le diffuseur peut être tourné à volonté. Sur le câble d'alimentation électrique se trouve l'interrupteur on/off. Le câble a une longueur de 1,5 m (59,1 m) et est revêtu de soie noire.

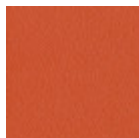


La lampe fait partie de la **collection Charlotte**

- <https://www.midj.com/fr/produits/collections/charlotte> qui comprend également des variantes de sol et de suspension. La collection s'inspire du courant Bauhaus, propose des géométries simplifiées au maximum, presque abstraites, facilement lisibles par rapport à l'espace.

### Couleurs et matériaux

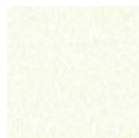
#### Structure



Métal orange papaya



Métal bleu ciel



Metal blanc



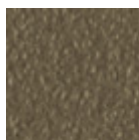
Métal bleu ocean



Métal bronze



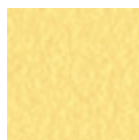
Metal corde



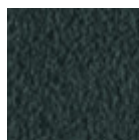
Métal fango



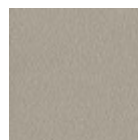
Métal jaune doré



Métal jaune pastel



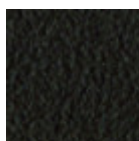
Métal graphite



Métal gris cendre



Métal gris claire



Métal marron



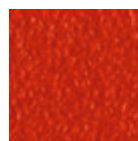
Metal noir



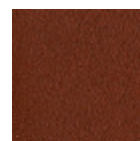
Métal ocre



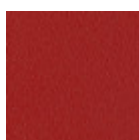
Métal rose poudre



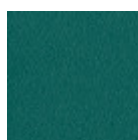
Métal rosso



Métal rouge bulgare



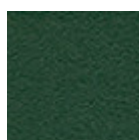
Métal rouge cerise



Métal vert pin

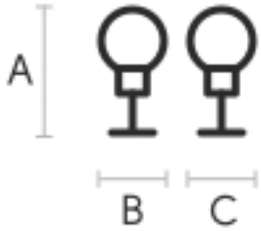


Métal vert sauge



Metal vert foncé

### Dimensions



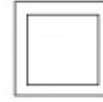
## Données volumétriques

**Poids** 2 Kg  
**Volume** 0.02 mc  
**Colis** 1

## Certifications



CE



**Classe II**

<b>A (cm)</b> (inch)	<b>B (cm)</b> (inch)	<b>C (cm)</b> (inch)
42	22	12
16.5	8.7	4.7

## Certifications matériaux

### Metal vert foncé

The technologies used in the previous phase of powder coating play a fundamental role in the final result of the processing. They are in fact essential to increase adherence paint on the metal surface and then guarantee its duration over time. The metal frames, following a total cleaning of the surface, pass through chemical conversion processes, creating a compact base that allows for better adhesion of the subsequent treatment. In the last phase the object subjected to the powder coating process is placed in a polymerization oven, going to form an adherent and extremely tight layer durable. This particular paint job is ideal for outdoor use.

To clean the surface, use a damp microfiber cloth with neutral soap or specific metal cleaning products. Avoid hitting or rubbing the surface with sharp objects. Do not use scourers or other abrasive materials, since they would inevitably scratch the surface. Do not leave rusty iron objects on the surface for too long.

These surface treatments are not suitable for outdoor use, but they guarantee excellent resistance to frequent use, dirt and dust.