

MIDJ

Tables basses Paw CTL

design Studio Pastina, 2020

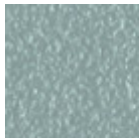


Table basse Paw avec piètement à quatre pieds en métal laqué.
Plateau disponible en céramique ou en métal.

La table basse Paw est disponible en trois tailles différentes.

Couleurs et matériaux

Structure



Métal bleu ciel



Metal blanc



Métal bleu ocean



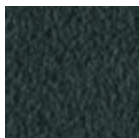
Métal bronze



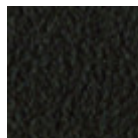
Metal corde



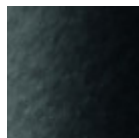
Métal jaune pastel



Métal graphite



Métal marron



Metal noir



Métal ocre



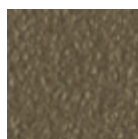
Métal rose poudre



Métal rosso



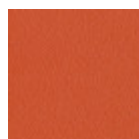
Métal vert sauge



Métal fango



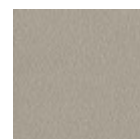
Métal gris claire



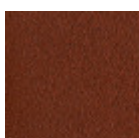
Métal orange papaya



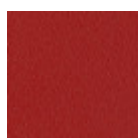
Métal jaune doré



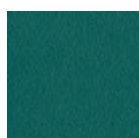
Métal gris cendre



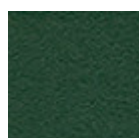
Métal rouge bulgare



Métal rouge cerise



Métal vert pin



Metal vert foncé

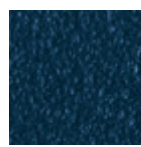
Plateau



Métal bleu ciel



Metal blanc



Métal bleu ocean



Métal bronze



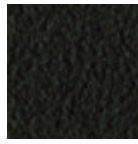
Metal corde



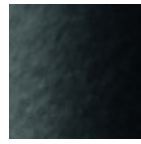
Métal jaune pastel



Métal graphite



Métal marron



Metal noir



Métal ocre



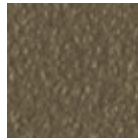
Métal rose poudre



Métal rosso



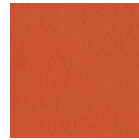
Métal vert sauge



Métal fango



Métal gris claire



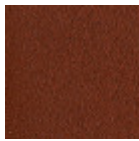
Métal orange papaya



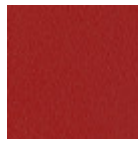
Métal jaune doré



Métal gris cendre



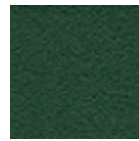
Métal rouge bulgare



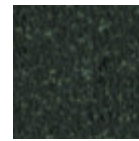
Métal rouge cerise



Métal vert pin



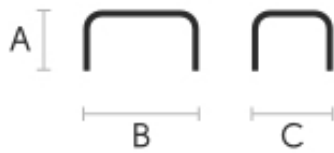
Metal vert foncé



Cristalceramique

12 Couleurs

Dimensions



Données volumétriques

Poids 14 Kg

Volume 0.24 mc

Colis 1

	A (cm)	B (cm)	C (cm)
	(inch)	(inch)	(inch)
Paw CTL			
(cm)	50	90	50
(inch)	19.7	35.4	19.7
Paw CTS			
(cm)	30	90	50
(inch)	11.8	35.4	19.7
Paw CTM			
(cm)	40	50	50
(inch)	15.7	19.7	19.7

Certifications matériaux

Metal vert foncé

The technologies used in the previous phase of powder coating play a fundamental role in the final result of the processing. They are in fact essential to increase adherence paint on the metal surface and then guarantee its duration over time. The metal frames, following a total cleaning of the surface, pass through chemical conversion processes, creating a compact base that allows for better adhesion of the subsequent treatment. In the last phase the object subjected to the powder coating process is placed in a polymerization oven, going to form an adherent and extremely tight layer durable. This particular paint job is ideal for outdoor use.

To clean the surface, use a damp microfiber cloth with neutral soap or specific metal cleaning products.

Avoid hitting or rubbing the surface with sharp objects. Do not use scourers or other abrasive materials, since they would inevitably scratch the surface. Do not leave rusty iron objects on the surface for too long.

These surface treatments are not suitable for outdoor use, but they guarantee excellent resistance to frequent use, dirt and dust.

Certifications matériaux

Metal vert foncé

The technologies used in the previous phase of powder coating play a fundamental role in the final result of the processing. They are in fact essential to increase adherence paint on the metal surface and then guarantee its duration over time. The metal frames, following a total cleaning of the surface, pass through chemical conversion processes, creating a compact base that allows for better adhesion of the subsequent treatment. In the last phase the object subjected to the powder coating process is placed in a polymerization oven, going to form an adherent and extremely tight layer durable. This particular paint job is ideal for outdoor use.

To clean the surface, use a damp microfiber cloth with neutral soap or specific metal cleaning products. Avoid hitting or rubbing the surface with sharp objects. Do not use scourers or other abrasive materials, since they would inevitably scratch the surface. Do not leave rusty iron objects on the surface for too long.

These surface treatments are not suitable for outdoor use, but they guarantee excellent resistance to frequent use, dirt and dust.