

# MIDJ



## Fauteuil **Calla P M\_Q PP**

design Fabrizio Batoni, 2019

Fauteuil en plastique avec accoudoirs. Coque en polypropylène et base en acier laqué à quatre pieds. En option: coussin pour l'assise revêtu en cuir, simili cuir ou tissu.

Lorsque la coque en plastique et le coussin en tissu se rejoignent dans une synergie délicate, le design devient plus précieux et le confort encore plus grand.

### Couleurs et matériaux

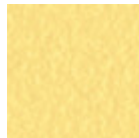
#### Structure



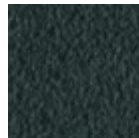
Métal blanc



Métal corde



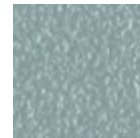
Métal jaune pastel



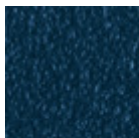
Métal graphite



Métal noir



Métal bleu ciel



Métal bleu ocean



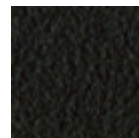
Métal bronze



Métal fango



Métal gris claire



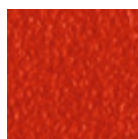
Métal marron



Métal ocre



Métal rose poudre



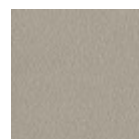
Métal rosso



Métal vert sauge



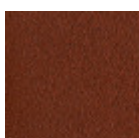
Métal orange papaya



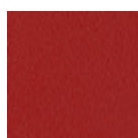
Métal gris cendre



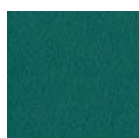
Métal jaune doré



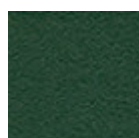
Métal rouge bulgare



Métal rouge cerise



Métal vert pin



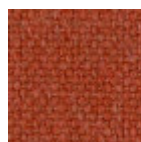
Métal vert foncé

#### Revêtement

## Polypropylène

10 Couleurs

### Dossier



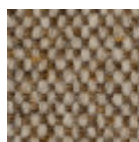
**Tissu Cotton Club**

14 Couleurs



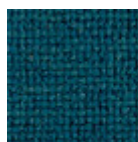
**Tissu Fenix Wool**

16 Couleurs



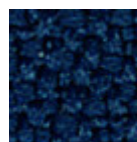
**Tissu Main Line Flax**

16 Couleurs



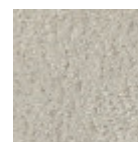
**Tissu manhattan**

13 Couleurs



**Tissu Mirage**

15 Couleurs



**Tissu Novabuk**

17 Couleurs



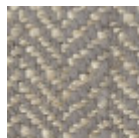
**Tissu Oceanic**

13 Couleurs



**Tissu Remix 3**

19 Couleurs



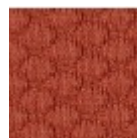
**Tissu Second**

11 Couleurs



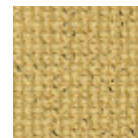
**Tissu Uniform  
Melange**

7 Couleurs



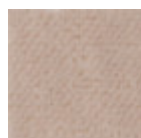
**Tissu Visual**

13 Couleurs



**Tissu Yoredale**

14 Couleurs



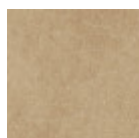
**Velours Superb**

16 Couleurs



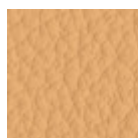
**Similicuir Secret**

23 Couleurs



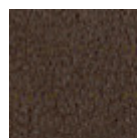
**Similicuir Vintage**

12 Couleurs



**Plein Fleur**

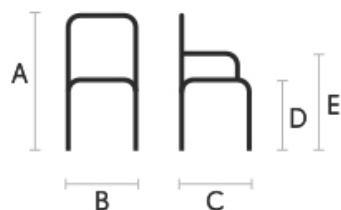
21 Couleurs



**Peau vintage**

8 Couleurs

### Dimensions



A	B	C	D	E
(cm)	(cm)	(cm)	(cm)	(cm)
(inch)	(inch)	(inch)	(inch)	(inch)
78	52	55	46	68
30,7	20,5	21,7	18,1	26,8

### Téléchargements

[Catalogue Calla \(pdf\)](https://www.midj.com/images/uploads/resources/2020-midj-calla-catalog.pdf) - <https://www.midj.com/images/uploads/resources/2020-midj-calla-catalog.pdf>

### Certifications matériaux

#### Metal vert foncé

The technologies used in the previous phase of powder coating play a fundamental role in the final result of the processing. They are in fact essential to increase adherence paint on the metal surface and then guarantee its duration over time. The metal frames, following a total cleaning of the surface, pass through chemical conversion processes, creating a compact base that allows for better adhesion of the subsequent treatment. In the last phase the object subjected to the powder coating process is placed in a polymerization oven, going to form an adherent and extremely tight layer durable. This particular paint job is ideal for outdoor use.

To clean the surface, use a damp microfiber cloth with neutral soap or specific metal cleaning products. Avoid hitting or rubbing the surface with sharp objects. Do not use scourers or other abrasive materials, since they would inevitably scratch the surface. Do not leave rusty iron objects on the surface for too long.

These surface treatments are not suitable for outdoor use, but they guarantee excellent resistance to frequent use, dirt and dust.

---

## Certifications matériaux

### Polypropylène

Polypropylene is a resistant, non-toxic, odorless, heat resistant and easy to clean plastic material. It is also suitable for outdoor use. Our polypropylene is a material reinforced with glass fiber: an option with excellent mechanical properties that allows the product to be solid and resistant. This material has a marked resistance to fading: a treatment with UV stabilizer and AS antistatic protection works to prolong the beauty of the product by slowing the fading process. However, by exposing the chair to the sun and atmospheric agents for very long periods, the color can undergo alterations. As a thermoplastic material, it is 100% recyclable.

#### CLEANING AND MAINTENANCE

Polypropylene seats are easy to clean, and do not require the use of specific products, except in the case of stubborn and hard to remove stains. For simple and effective cleaning, use a microfiber cloth soaked in water or a solution of water and neutral soap. In case of stubborn stains, it is possible to act directly on them with a neutral detergent, always with the help of a microfiber cloth. Then rinse with water. Avoid abrasive sponges, stain removers and granular cleaners that could scratch the surface. If using a chlorine-based cleaner, rinse and do not dry in direct sunlight.

These tips are cleaning recommendations and do not guarantee complete stain removal.

We recommend that you always test the cleaning method on a hidden part of the item to check the resistance of the material.