

MIDJ



Chaise Liù S ML RS

design Archirivolto, 2013

Chaise Liù avec piètement à quatre pieds en bois et métal. Coque en Restylon®.

Couleurs et matériaux

Structure



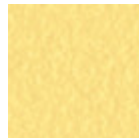
Frêne Laqué
11 Couleurs



Metal blanc



Metal corde



Métal jaune pastel



Métal graphite



Metal noir



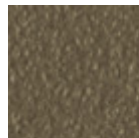
Métal bleu ciel



Métal bleu ocean



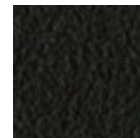
Métal bronze



Métal fango



Métal gris claire



Métal marron



Métal ocre



Métal rose poudre



Métal rosso



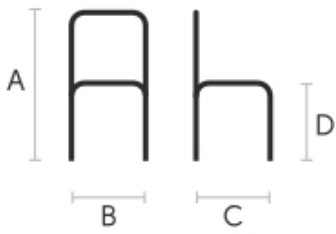
Métal vert sauge

Revêtement



Restylon
7 Couleurs

Dimensions



Données volumétriques

Poids 11 Kg
Volume 0.22 mc
Colis 1

Certifications

CATAS
CATAS
EN 1728

	cm	inch
A	84	33.1
B	48	18.9
C	55	21.7
D	46	18.1

Certifications matériaux

Frêne Laqué

Ash wood is durable material, with good resistance and flexibility. Thanks to its porosity, it is ideal to be lacquered. Its original color is quite light: it can range from light blond, to pink and pale brown, with possible shades of green. In our set of samples, it is available in the natural finish and in numerous color variations: from the classic wood effects to the most pop colors of the moment. The ash used for our materials is European.

CLEANING AND MAINTENANCE

Ash is an easy-to-clean wood: to remove dust or light stains, rub the surface with a soft cloth, if necessary moistened in a solution of hot water or white vinegar, to help eliminate stains without altering the beauty and shine of the wood. Always dry the surface. In addition, you can choose to use specific products for wooden furniture.

These tips are cleaning recommendations and do not guarantee complete stain removal. We recommend that you always test the cleaning method on a hidden part of the item to check the resistance of the color.

Colour samples are to be considered approximate for each product. Slight color differences between a lot and the other are to be considered normal.