

MIDJ

Tables basses Trampoliere H54 ø50

design Roberto Paoli, 2013



Coffee table Trampoliere avec base à trois rayons en métal. Top en mélamine ou HPL.

Disponible en trois variantes différentes : H34 Ø70, H44 Ø60, H54 Ø50.

Couleurs et matériaux

Structure



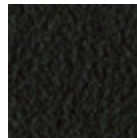
Métal blanc



Métal noir



Métal corde



Métal marron



Métal graphite



Métal jaune pastel



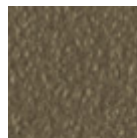
Métal bleu ciel



Métal bleu ocean



Métal bronze



Métal fango



Métal gris claire



Métal ocre



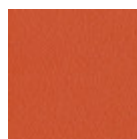
Métal rose poudre



Métal rosso



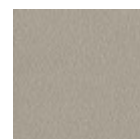
Métal vert sauge



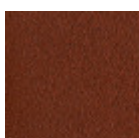
Métal orange papaya



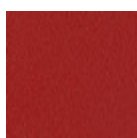
Métal jaune doré



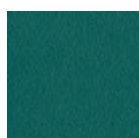
Métal gris cendre



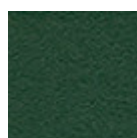
Métal rouge bulgare



Métal rouge cerise



Métal vert pin

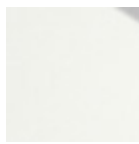
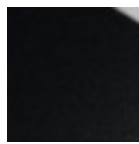


Metal vert foncé

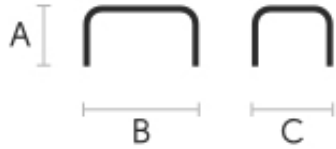
Plateau

**Melamine**

4 Couleurs

**Hpl blanc bord noir****Hpl noir****Hpl grigio cemento****Hpl corten****Hpl blanc bord blanc**

Dimensions



	A (cm) (inch)	B (cm) (inch)	C (cm) (inch)
Trampoline H54 (cm) (inch)	54 21.3	50 19.7	50 19.7
Trampoline H34 (cm) (inch)	34 13.4	70 27.6	70 27.6
Trampoline H44 (cm) (inch)	44 17.3	60 23.6	60 23.6

Données volumétriques

Poids 14.5 Kg**Volume** 0.15 mc**Colis** 2

Certifications matériaux

Metal vert foncé

The technologies used in the previous phase of powder coating play a fundamental role in the final result of the processing. They are in fact essential to increase adherence paint on the metal surface and then guarantee its duration over time. The metal frames, following a total cleaning of the surface, pass through chemical conversion processes, creating a compact base that allows for better adhesion of the subsequent treatment. In the last phase the object subjected to the powder coating process is placed in a polymerization oven, going to form an adherent and extremely tight layer durable. This particular paint job is ideal for outdoor use.

To clean the surface, use a damp microfiber cloth with neutral soap or specific metal cleaning products. Avoid hitting or rubbing the surface with sharp objects. Do not use scourers or other abrasive materials, since they would inevitably scratch the surface. Do not leave rusty iron objects on the surface for too long.

These surface treatments are not suitable for outdoor use, but they guarantee excellent resistance to frequent use, dirt and dust.