

MIDJ



Tabouret Ola H65 M

design Paolo Vernier, 2016

Tabouret ola avec structure et base en acier peint, adapté pour une utilisation extérieure.

Couleurs et matériaux

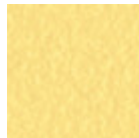
Structure



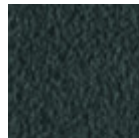
Metal blanc



Metal corde



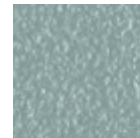
Métal jaune pastel



Métal graphite



Metal noir



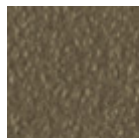
Métal bleu ciel



Métal bleu ocean



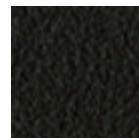
Métal bronze



Métal fango



Métal gris claire



Métal marron



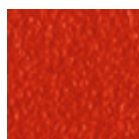
Métal ocre



Métal rose poudre

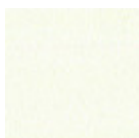


Métal vert sauge



Métal rosso

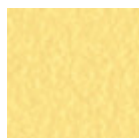
Revêtement



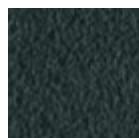
Metal blanc



Metal corde



Métal jaune pastel



Métal graphite



Metal noir



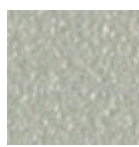
Métal bleu ocean



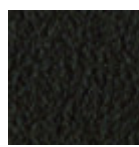
Métal bronze



Métal fango



Métal gris claire



Métal marron



Métal ocre



Métal rose poudre

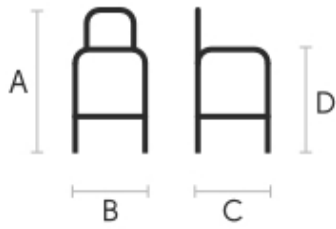


Métal vert sauge



Métal rosso

Dimensions



	cm	inch
A	90	35.4
B	50	19.7
C	51	20.1
D	65	25.6

Données volumétriques

Poids 9 Kg

Volume 0.28 mc

Colis 1