

MIDJ
INITALY

Chaise Pippi S

design Roberto Paoli, 2019

Chaise avec structure à quatre pieds recouverte en tissu. Pieds en acier.



Couleurs et matériaux

Structure



Acier blanc



Acier corde



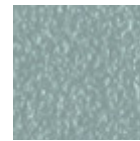
Acciaio Jaune Pastel



Acier graphite



Acier noir



Acier Bleu Ciel



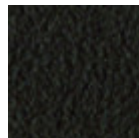
Acier Bleu Ocean



Acier Bronze



Acier Fango



Acier marron



Acier Gris Claire



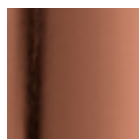
Acier Ocre



Acier Rose Poudre



Acier Vert Saugé



Or rosé

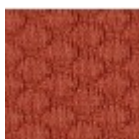


Noir nickel



Bonze Doré

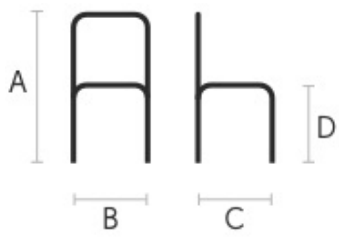
Revêtement



Tissu Visual

11 Couleurs

Dimensions



Données volumétriques

Poids 8 Kg

Volume 0.23 mc

Colis 1

	cm	inch
A	77	30.3
B	47	18.5
C	55	21.7
D	46	18.1