

MIDJ



Table bistro **Break /3**

Break /3 base bistrot avec piètement à trois pieds en acier laqué ou chromé en combinaison avec plateaux de tailles et finitions différentes.

Base pour plateaux ronds: ø60, ø70.

Couleurs et matériaux

Structure



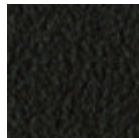
Métal blanc



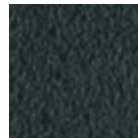
Métal noir



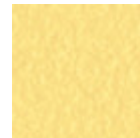
Métal corde



Métal marron



Métal graphite



Métal jaune pastel



Métal bleu ciel



Métal bleu ocean



Métal bronze



Métal fango



Métal gris claire



Métal ocre



Métal rose poudre



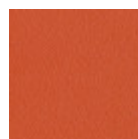
Métal rosso



Métal vert sauge



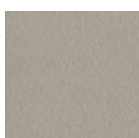
Chromé



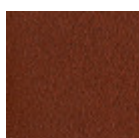
Métal orange papaya



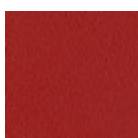
Métal jaune doré



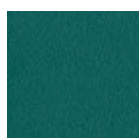
Métal gris cendre



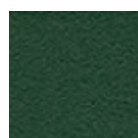
Métal rouge bulgare



Métal rouge cerise



Métal vert pin



Metal vert foncé

Plateau



Melamine

4 Couleurs



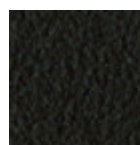
Metal blanc



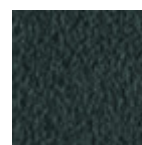
Metal noir



Metal corde



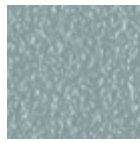
Métal marron



Métal graphite



Métal jaune pastel



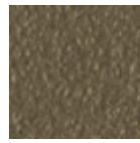
Métal bleu ciel



Métal bleu ocean



Métal bronze



Métal fango



Métal gris claire



Métal ocre



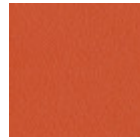
Métal rose poudre



Métal rosso



Métal vert sauge



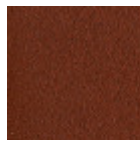
Métal orange papaya



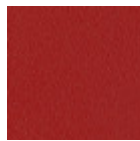
Métal jaune doré



Métal gris cendre



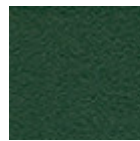
Métal rouge bulgare



Métal rouge cerise



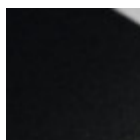
Métal vert pin



Metal vert foncé



Hpl blanc bord noir



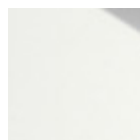
Hpl noir



Hpl cemento

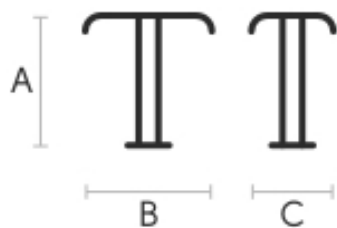


Hpl corten



Hpl blanc bord blanc

Dimensions



	A (cm) (inch)	B (cm) (inch)	C (cm) (inch)
Break /3 (cm) (inch)	73 28.7	45 17.7	45 17.7

Données volumétriques

Poids 6 Kg
Volume 0.20 mc
Colis 2

Certifications matériaux

Metal vert foncé

The technologies used in the previous phase of powder coating play a fundamental role in the final result of the processing. They are in fact essential to increase adherence paint on the metal surface and then guarantee its duration over time. The metal frames, following a total cleaning of the surface, pass through chemical conversion processes, creating a compact base that allows for better adhesion of the subsequent treatment. In the last phase the object subjected to the powder coating process is placed in a polymerization oven, going to form an adherent and extremely tight layer durable. This particular paint job is ideal for outdoor use.

To clean the surface, use a damp microfiber cloth with neutral soap or specific metal cleaning products.

Avoid hitting or rubbing the surface with sharp objects. Do not use scourers or other abrasive materials, since they would inevitably scratch the surface. Do not leave rusty iron objects on the surface for too long.

These surface treatments are not suitable for outdoor use, but they guarantee excellent resistance to frequent use, dirt and dust.

Certifications matériaux

Metal vert foncé

The technologies used in the previous phase of powder coating play a fundamental role in the final result of the processing. They are in fact essential to increase adherence paint on the metal surface and then guarantee its duration over time. The metal frames, following a total cleaning of the surface, pass through chemical conversion processes, creating a compact base that allows for better adhesion of the subsequent treatment. In the last phase the object subjected to the powder coating process is placed in a polymerization oven, going to form an adherent and extremely tight layer durable. This particular paint job is ideal for outdoor use.

To clean the surface, use a damp microfiber cloth with neutral soap or specific metal cleaning products. Avoid hitting or rubbing the surface with sharp objects. Do not use scourers or other abrasive materials, since they would inevitably scratch the surface. Do not leave rusty iron objects on the surface for too long.

These surface treatments are not suitable for outdoor use, but they guarantee excellent resistance to frequent use, dirt and dust.