

MIDJ
INITALY

Tables basses Apelle Trio

design Beatriz Sempere, 2013

Apelle Trio table basse avec structure en acier laqué blanc ou noir, nickel noir ou or rose. Plateau en ceramique ou revêtu en cuir.



Couleurs et matériaux

Structure



Acier blanc



Acier noir



Acier corde



Acier marron



Acier graphite



Acier Fango



Acier Bronze



Acciaio Jaune Pastel



Acier Ocre



Acciaio rosso



Acier Vert Saugé



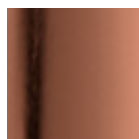
Acier Bleu Ocean



Acier Gris Claire



Acier Rose Poudre



Or rosé



Noir nickel



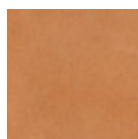
Bonze Doré

Revêtement



Cuir

20 Couleurs

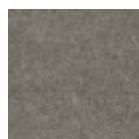


Cuir Toscan

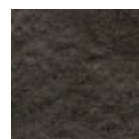
3 Couleurs



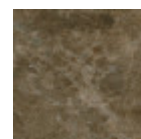
Céramique Plomb



Céramique Savoia
Cement



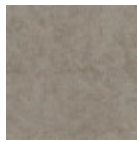
Céramique Savoia
Anthracite



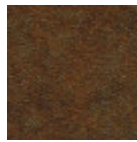
Céramique Marbre
Emperador



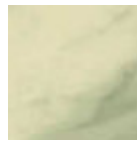
Céramique Oxide Blanc



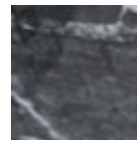
Céramique Oxide Corde



Céramique Corten



Ceramique marbre
1 Couleur



Céramique brillante grec noir



Céramique brillante noir desir



Céramique brillante vénitienne

Dimensions

Dimensions

Données volumétriques

Poids 15 Kg

Volume 0,25 mc

Colis 1

Image not found or type unknown

	A (cm) (inch)	B (cm) (inch)	C (cm) (inch)
Apelle TRIO (cm) (inch)	55 21.7	71 28	62 24.4

Téléchargements

[3ds Apelle Trio \(zip\)](https://www.midj.com/images/uploads/resources/3ds-midj-apelle-trio.zip) - <https://www.midj.com/images/uploads/resources/3ds-midj-apelle-trio.zip>