

MIDJ
INITALY

Tables basses **Walter**

Walter table de café avec piètement à quatre pieds en acier blanc, noir ou chromé. Plateau en inox satiné.

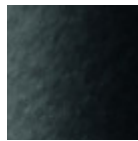


Couleurs et matériaux

Structure



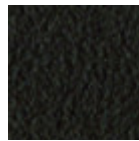
Acier blanc



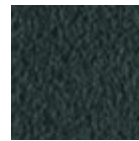
Acier noir



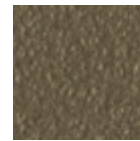
Acier corde



Acier marron



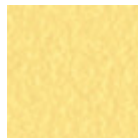
Acier graphite



Acier Fango



Acier Bronze



Acciaio Jaune Pastel



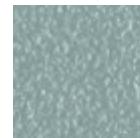
Acier Ocre



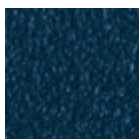
Acciaio rosso



Acier Vert Saugé



Acier Bleu Ciel



Acier Bleu Ocean



Acier Gris Claire



Acier Rose Poudre



Chromé

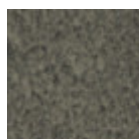
Revêtement



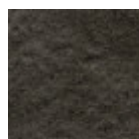
Inox brillant



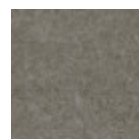
Acier satiné



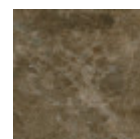
Céramique Plomb



Céramique Savoia
Anthracite



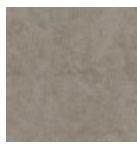
Céramique Savoia
Cement



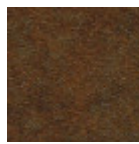
Céramique Marbre
Emperador



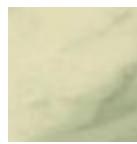
Céramique Oxide Blanc



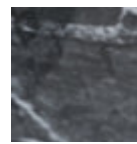
Céramique Oxide Corde



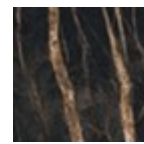
Céramique Corten



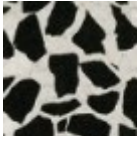
Ceramique marbre
1 Couleur



Céramique brillante grec noir

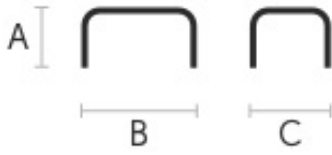


Céramique brillante noir desir



Céramique brillante vénitienne

Dimensions



| | A (cm) (inch) | B (cm) (inch) | C (cm) (inch) |
|--------------------------------|------------------|------------------|------------------|
| 40x40 (cm) (inch) | 50 19.7 | 40 15.7 | 40 15.7 |
| 60x40 (cm) (inch) | 50 19.7 | 60 23.6 | 40 15.7 |

Données volumétriques

Poids 9 Kg

Volume 0.12 mc

Colis 1