

Table Gran Sasso

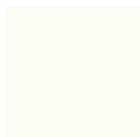
design Andrea Lucatello

Table fixe avec base Baydur® ou ciment spatulé, insert en acier laqué et plateau tonneau en cristal ou cristalceramique.



Couleurs et matériaux

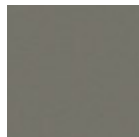
Structure



Baydur blanc



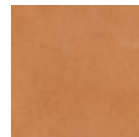
Baydur Gris Cendre



Baydur Gris Foncé



Baydur effet béton
brossé
2 Couleurs



Cuir Toscan
3 Couleurs

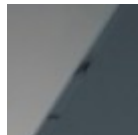


Cuir TK
9 Couleurs

Revêtement



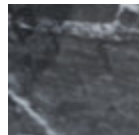
Verre Transparent
extra-blanc



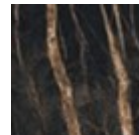
Verre Brillant Fumé



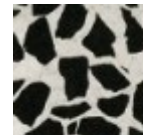
Crystalceramique
marbre calacatta



Cristalceramique
Marbre Greco Noir
Brillant

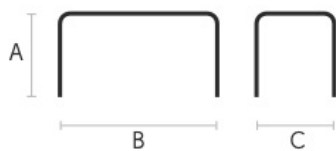


Crystalceramique
marbre noir desir



Crystalceramique
vénitien

Dimensions



	A (cm) (inch)	B (cm) (inch)	C (cm) (inch)
220x116 (cm) (inch)	76 29.9	220 86.6	116 45.7
250x120 (cm) (inch)	76 29.9	250 98.4	120 47.2

Données volumétriques

Poids 195 Kg
Volume 0.77 mc
Colis 2