

MIDJ
INITALY



Table Nenè triangulaire

Nenè triangulaire table à trois pieds en métal laqué.

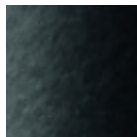
Plateau en melamine ou HPL.

Couleurs et matériaux

Structure



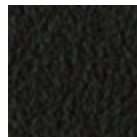
Metal blanc



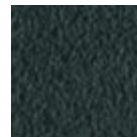
Metal noir



Metal corde



Métal marron

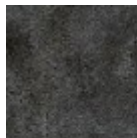


Métal graphite

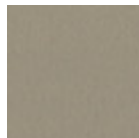
Revêtement



Melamine blanc



Melamine noir



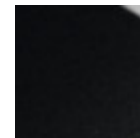
Mélamine corde



Melamine graphite



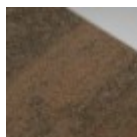
Hpl blanc bord noir



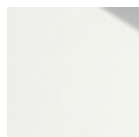
Hpl noir



Hpl cemento



Hpl corten



Hpl blanc bord blanc

Dimensions



	cm	inch
A	75	29.5
B	82	32.3
C	82	32.3

Données volumétriques

Poids 19.5 Kg
Volume 0.28 mc
Colis 3

Téléchargements

3D Nenè Triangolare (zip) - <https://www.midj.com/images/uploads/resources/nene-triangolare.zip>