

MIDJ
INITALY

Tabouret Stone SG TS

design Midj R&D, 2012

Tabouret pivotant et réglable en hauteur avec base ronde en acier chromé. Assise revêtue en peau, similicuir, tissu ou tissu fourni par le client.



Couleurs et matériaux

Structure



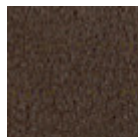
Chromé

Revêtement



Plein Fleur

18 Couleurs



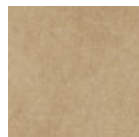
Peau vintage

4 Couleurs



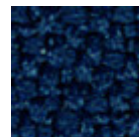
Similicuir Secret

22 Couleurs



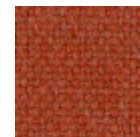
Similicuir Vintage

12 Couleurs



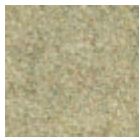
Tissu Mirage

6 Couleurs



Tissu Cotton Club

13 Couleurs



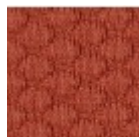
Tissu Fenix Wool

13 Couleurs



Tissu Carabù

15 Couleurs



Tissu Visual

11 Couleurs



Tissu Bubble

14 Couleurs



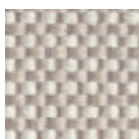
Tissu Hot

14 Couleurs



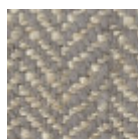
Tissu Main Line Flax

16 Couleurs



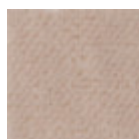
Tissu Scubidù

10 Couleurs



Tissu Second

11 Couleurs



Velours Superb

15 Couleurs

Dimensions

Données volumétriques

Poids 14 Kg

Volume 0.23 mc

Colis 1

Image not found or type unknown

| | cm | inch |
|----------|--------|-----------|
| A | 92/118 | 36.2/46.5 |
| B | 42 | 16.5 |
| C | 49 | 19.3 |
| D | 58/84 | 28.8/33.1 |

Certifications matériaux

Plein Fleur

COMPOSITION: 100% pelle

FIRE RESISTANCE:

BS 5852:1979

BS EN 1021-1-2:2006

PROPRIETIES AND ADVANTAGES

The Fiore leather is a bovine leather of european origin, corrected and embossed for enhanced grain consistency. Finished using water based system. This product has a pigmented and protective top coat, with a soft handle and a silky matt finish.

CLEANING INSTRUCTIONS

Grain leather offers the benefit of improving in the course of time and with wear, both in terms of softness and sheen. To remove stains, it is advisable to rub the affected area with a clean, soft cloth or use a solution of water and a little neutral soap that must be applied gently onto the stain using a damp cloth. Rinse thoroughly and leave to dry away from direct sunlight.

Certifications matériaux

Peau vintage

Our Vintage Leather is a natural product, therefore the signs and imperfections on its surface, such as wrinkles, veins, scars and scratches as well as color differences are not to be considered defects but typical characteristics that enhance the beauty of the real leather and distinguish it from synthetic leather and other artificial products.

MARTINDALE: 50.000 cycles

PROPRIETIES AND ADVANTAGES

This leather with a distressed effect comes from Bovine of European origin. This high quality article is obtained starting with nubuck leather, which is slightly levelled with aniline and hand rubbed to give an aged effect. It has a very warm and silky feel.

CLEANING INSTRUCTIONS

Vintage leather offers the benefit of improving in the course of time and with wear, both in terms of softness and sheen. Remove stains with a damp cloth and leave to dry away from sunlight. Do not use chemical detergents.

Slight color differences between a lot and the other are to be considered normal.

Certifications matériaux

Similicuir Secret

MARTINDALE: 60'000 cycles

COMPOSITION: 76% PVC - 2% PU 22% PES

FIRE RESISTANCE:

EN 1021-2:2006

UNI 9175 CLASSE 1 IM

BS5852-1:1979 part 1

TB 117:2013

PROPRIETIES AND ADVANTAGES

Secret is a fire retardant ecoleather totally made in Italy. It contains high resistant polymers of new conception more resistant to sun exposure and to use. Secret has been designed to realize soft interior upholstery: its elastic backing, made of polyester, allows it to adapt to the new geometries of upholstery with greater assurance of strength and durability.

CLEANING INSTRUCTIONS

Dust gently and in case of light stains pass the surface with a damp cloth or a neutral detergent, rinse with water without squeezing. Let the fabric dry inside out avoiding direct exposure to the sunlight. Iron to the reverse at low temperature. The following instructions are recommended for small located and more obstinate stains (oil, fat, cosmetics, ink, coffee, liquor, chewing-gum etc.): dissolve immediately with clear ethylic alcohol diluted in water to 20%, dab and then treat with a neutral detergent solution. Rinse abundantly. To avoid permanent stains, the lighter colours of the article should not be brought into contact with textiles and clothing coloured with unfixed dyes. We cannot guarantee the ability to remove unknown dyes from light coloured product.

Certifications matériaux

Similicuir Vintage

MARTINDALE: 50'000 cycles

COMPOSITION: 80% PVC; 2% PU; 18% PES

FIRE RESISTANCE:

UNI 9175: classe 1IM

EN 1021-2

PROPRIETIES AND ADVANTAGES

This faux leather's surface is made using a microscopic texture which makes it similar to natural leather to the touch while keeping the typical characteristics of technical fabric such as endurance and ease of use. The Vintage faux leather features a special mesh fabric construction, slightly elastic, that makes it easily adaptable to the new modern shapes of upholstered furniture and guarantees long life. Soft, enveloping and fire resistant, this fabric adapts to contract or residential spaces.

CLEANING INSTRUCTIONS

Dust gently and in case of light stains pass the surface with a damp cloth or a neutral detergent, rinse with water without squeezing. Let the fabric dry inside out avoiding direct exposure to the sunlight. Iron to the reverse at low temperature. The following instructions are recommended for small located and more obstinate stains (oil, fat, cosmetics, ink, coffee, liquor, chewing-gum etc.): dissolve immediately with clear ethylic alcohol diluted in water to 20%, dab and then treat with a neutral detergent solution. Rinse abundantly. To avoid permanent stains, the lighter colours of the article should not be brought into contact with textiles and clothing coloured with unfixed dyes. We cannot guarantee the ability to remove unknown dyes from light coloured product.

Certifications matériaux

Tissu Mirage

Mantindale: 100.000 cycles

Composition: 100% Polyester

Rétrécissement estimé 1%

Tissu ignifuge: classe 1IM, B1 DIN 4102, M1, B1 OENORM Part.1, BS 5852 Crib 5, EN 1021, USA Calif.

Bull 117, IMO 688 (17) - IMO 563 (14) - IMO 653 (16)

Certifications matériaux

Tissu Cotton Club

COMPOSITION: 70 % COT; 10% PES; 10% ACR; 10% AF

Certifications matériaux

Tissu Fenix Wool

Martindale: 100.000 cycles

Composition: 70% Wool, 25% Polyamid, 5% Fibers
Rétrécissement estimé 1%

Tissu ignifuge: BS 5852 part. 1, Cigaret test, Match test

Certifications matériaux

Tissu Carabù

COMPOSITION: 50% PES, 35% AC, 15% PA

MARTINDALE: 250.000 CYCLES

RÉSISTANCE AU FEU:

BS 5852 1-2

EN 1021 1-2

PROPRIETIES AND ADVANTAGES:

This special fabric allows you to eliminate little stains of wine, coffee, food and some markers without having to resort to complete washing with detergent.

MAINTENANCE:

Use periodically vacuum cleaner on the surface with a flat spout. In order to treat the stains, remove the excess residue left on the fabric by applying (directly or with an absorbent cloth) water on the stain; then rub gently on the fabric. If the stain does not disappear completely repeat the procedure as many times as necessary.

Slight color differences between a lot and the other are to be considered normal.

Certifications matériaux

Tissu Bubble

Martindale: 35.000 cycles

Composition: 100% Pes

Tissu ignifuge: BS5852:2006 (p. 11 CRIB 5), EN1021-1, EN1021-2, UNI 9175:2010 - classe 1 im

PROPERTIES AND ADVANTAGES:

Bubble is a polyester fabric entirely manufactured and tested in Italy which has been studied for the upholstered furniture sector. Made applying special technical finishings that reduce height and increase thickness of the geometrical shapes on the surface. This fabric is highly resistant and both its warp and weft are 100% fireproof. Since it has successfully passed the most exacting reaction to fire tests, it can be used in the professional and hospitality/ contract settings. Bubble mixes together the elegance, the embracing materials and the prestige of traditional home fabrics with the resistance and the high technical performances typical of contract textile.

MAINTENANCE:

PEN: Treat immediately using denatured colourless alcohol. Brush then using neutral detergent and rinse.

MILK, BUTTER AND OIL: Absorb immediately using blotting paper. Brush then using neutral Detergent.

Rinse. DRINKS: Rinse immediately with abundant water and neutral soap. Rinse. ADHESIVE AND

CHEWINGUM: harden the stain using some ice, remove the residues, apply a lubricant solution and let it dry. If necessary, repeat the operation and rinse. FOOD DEBRIS: brush with water and neutral soap or

with alcohol diluted in water at 20%. Rinse. The remedies here explained are effective in 90% of the cases. Lack of quick actions make them less effective, leaving consequently some permanent haloes.

Slight color differences between a lot and the other are to be considered normal.

Certifications matériaux

Tissu Hot

Martindale: 45.000 cycles

Composition: 100% Pes

PROPERTIES AND ADVANTAGES:

Hot is a polyester fabric entirely manufactured and tested in Italy which has been studied for the upholstered furniture sector. Special dyeing methods are used to provide volume to Hot fabrics and make them extremely soft. This fabric is highly resistant and both its warp and weft are 100% fireproof. Since it has successfully passed the most exacting reaction to fire tests, it can be used in the professional and hospitality/ contract settings. Hot mixes together the elegance, the embracing materials and the prestige of traditional home fabrics with the resistance and the high technical performances typical of contract textile.

MAINTENANCE:

PEN: Treat immediately using denatured colourless alcohol. Brush then using neutral detergent and rinse.
MILK, BUTTER AND OIL: Absorb immediately using blotting paper. Brush then using neutral Detergent. Rinse.
DRINKS: Rinse immediately with abundant water and neutral soap. Rinse.
ADHESIVE AND CHEWINGUM: harden the stain using some ice, remove the residues, apply a lubricant solution and let it dry. If necessary, repeat the operation and rinse.
FOOD DEBRIS: brush with water and neutral soap or with alcohol diluted in water at 20%. Rinse. The remedies here explained are effective in 90% of the cases. Lack of quick actions make them less effective, leaving consequently some permanent haloes.

Slight color differences between a lot and the other are to be considered normal.

Certifications matériaux

Tissu Main Line Flax

COMPOSITION: 70% Virgin Wool – 30% LI

MARTINDALE: 50.000 CYCLES

RÉSISTANCE AU FEU:

EN 1021 Part.1-2
BS 5852 Crib 5
BS 7176 Low Hazard
BS 7176 Medium Hazard
UNI 9175 Classe 1IM

FEATURES:

Main Line Flax is a precious fabric that derives from the processing of natural fibers such as flax and wool. It is an intrinsically fireproof fabric, coming from sustainable sources. Flax is mixed with wool, then dyed, to create wonderful plays of color.

MAINTENANCE:

Use regularly the smooth spout vacuum cleaner , without brushing. The textile product cannot stand chlorine treatment. Dry at low temperatures. In case of stains, promptly intervene by dabbing with a damp and clean cloth or using specific products for upholstery.

Slight color differences between a lot and the other are to be considered normal.

Certifications matériaux

Tissu Scubidù

COMPOSITION: 100% PL

MARTINDALE: 350.000 CYCLES

MAINTENANCE:

Use regularly the smooth spout vacuum cleaner , without brushing. The textile product cannot stand chlorine treatment. Dry at low temperatures. In case of stains, promptly intervene by dabbing with a damp and clean cloth or using specific products for upholstery.

Slight color differences between a lot and the other are to be considered normal.

Certifications matériaux

Tissu Second

Martindale 25.000 cycles

Composition: 70% VI - 30% LI

Résistance au feu:

Italy - Classe 1IM

EN 1021 Part.1-2

BS 5852 Crib 5

France - M1

USA Calif. Bull. 117 June 2013

IMO 307 (88) Part.8

Certifications matériaux

Velours Superb

COMPOSITION: 100% PES FR; TREVIRA CS

RÉSISTANCE AU FEU:

Italy - Classe 1IM

Germany- B1 DIN 4102

France - M1

BS 5852 Crib 5

EN 1021 Part.1-2

USA Calif. Bull. 117