

# MIDJ



## Tabouret **Silvy H65 M CU**

design Midj R&D, 2015

Tabouret à quatre pieds en acier laqué ou chromé. Assise et dossier en cuir. Hauteur du siège 65cm (25.6 in).

### Couleurs et matériaux

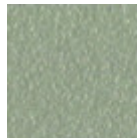
#### Structure



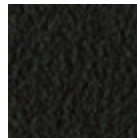
Metal blanc



Metal noir



Metal corde



Métal marron



Métal graphite



Chromé

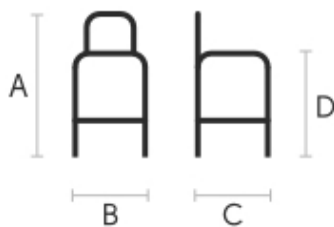
#### Revêtement



Cuir

18 Couleurs

### Dimensions



A (cm)	B (cm)	C (cm)	D (cm)
(inch)	(inch)	(inch)	(inch)
94	45	48	65
37	17.7	18.9	25.6

### Données volumétriques

Poids 4.5 Kg

Volume 0.27 mc

Colis 1

### Certifications matériaux

Cuir

FIRE RESISTANCE:

Hide is hygienic and practical, wear resistant and breathable. It is obtained from skin of cattle raised for food purposes, and subsequently treated with chromium salts. Any imperfections on the hide surface are a natural feature that guarantee its originality.

#### CLEANING AND MAINTENANCE

Dust the surface regularly, with a dry and soft cloth. In case of stains, use only a non-abrasive damp cloth, and gently rub the area by moving the cloth in a circular direction starting from the edges of the stain towards the center. We recommend to act promptly: a delay could compromise the cleaning result. Do not use products that contain solvents or alcohol since they can damage the surface. Dry immediately after treatment. For a good conservation of the product, avoid direct sunlight, that can alter its characteristics and color, as well as exposure to heat sources.

We recommend that you always test the cleaning method on a hidden part of the item to check the resistance of the color. These tips are cleaning recommendations and do not guarantee complete stain removal.

Colour samples are to be considered approximate for each product. Slight color differences between a lot and the other are to be considered normal.