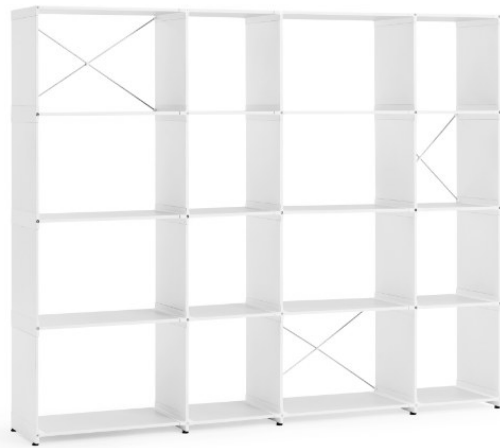


MIDJ

Civitas

design Giulio Iacchetti



Modular system composed by extruded aluminum joints and shelves in lacquered mdf or aluminum. Uprights and shelves available in two different widths, usable within the same configuration. Wall fixing, bracing essential for shelf (in the single column version as well).

This is how Giulio Iacchetti tells of his creation: "The name Civitas is a metaphor for the city that grows neatly on the matrix of the Roman camp. Like the city, the bookshop too can grow and transform, both vertically and horizontally."

Colors and Materials

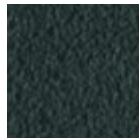
Structure



White steel



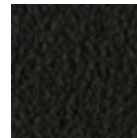
Sand steel



Grafite metal

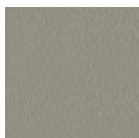


Black steel



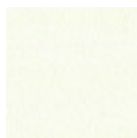
Brown steel

Coating

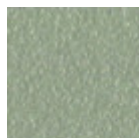


Laquered MDF

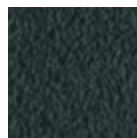
5 Colors



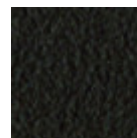
White steel



Sand steel



Grafite metal



Brown steel



Black steel