

MIDJ

P47 CT-S Coffee Table

design Franco Poli, 2021



The P47 coffee table is a piece of furniture that speaks of style and functionality in the most refined environments. With a transversal look, thanks to the possibility of chromatic customization, it adds a touch destined to be noticed.

Colors and Materials

Structure



Papaya orange steel



Light blue metal



White steel



Ocean blue steel



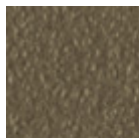
Bronze metal



Ash grey metal



Sand steel



Fango steel



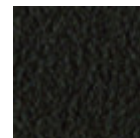
Golden yellow metal



Pastel yellow steel



Light grey steel



Brown steel



Black steel



Ocher steel



Golden champagne



Facepowder pink metal



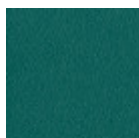
Red steel



Bulgaro red metal



Cherry red metal



Pine green steel



Sage green metal



Black Nickel



Pink Gold

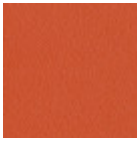


Golden bronze

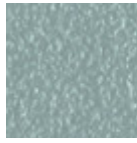


Chrome

Coating



Papaya orange steel



Light blue metal



White steel



Ocean blue steel



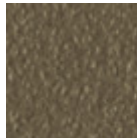
Bronze metal



Ash grey metal



Sand steel



Fango steel



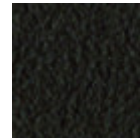
Golden yellow metal



Pastel yellow steel



Light grey steel



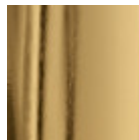
Brown steel



Black steel



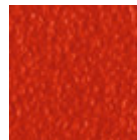
Ocher steel



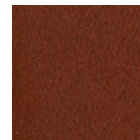
Golden champagne



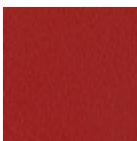
Facepowder pink metal



Red steel



Bulgaro red metal



Cherry red metal



Pine green steel



Sage green metal



Black Nickel



Pink Gold



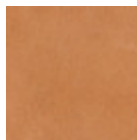
Golden bronze

Extensions



TK Hide

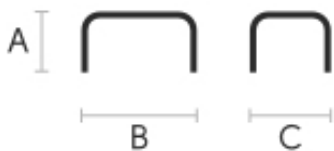
13 Colors



Tuscan hide

6 Colors

Dimensions



| | cm | inch |
|---|----|------|
| A | 60 | 23.6 |
| B | 40 | 15.7 |
| C | 38 | 15 |