

MIDJ



## Charlotte suspension

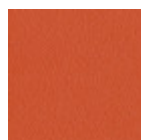
Suspension lamp with direct light. The lamp is made of metal and is available in the single black variant. The electric suspension cable is covered in black silk with a length of 2.5 m. Black metal ceiling rose. Available canopy decentralization kit and multiple canopy to create compositions up to six suspensions.

Inspired by the Bauhaus current, the **Charlotte collection**

- <https://www.midj.com/products/collections/charlotte> offers geometries that are simplified to the maximum, almost abstract, easily legible with respect to space.

### Colors and Materials

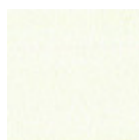
#### Structure



Papaya orange steel



Light blue metal



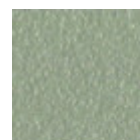
White steel



Ocean blue steel



Bronze metal



Sand steel



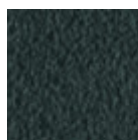
Fango steel



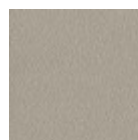
Golden yellow metal



Pastel yellow steel



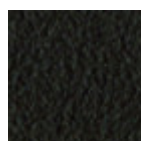
Grafite metal



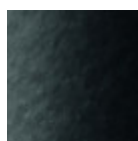
Ash grey metal



Light grey steel



Brown steel



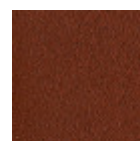
Black steel



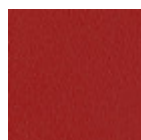
Ocher steel

Facepowder pink  
metal

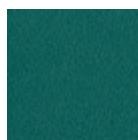
Red steel



Bulgaro red metal



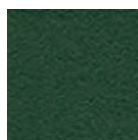
Cherry red metal



Pine green steel

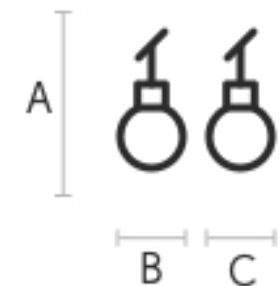


Sage green metal



Dark green metal

### Dimensions



A (cm)	B (cm)	C (cm)
(inch)	(inch)	(inch)
11	22	22
4.3	8.7	8.7

## Volumetric Details

**Weight** 1.5 Kg  
**Volume** 0.01 mc  
**Package** 1

## Certifications



CE

Classe I

## Materials Certifications

### Dark green metal

The technologies used in the previous phase of powder coating play a fundamental role in the final result of the processing. They are in fact essential to increase adherence paint on the metal surface and then guarantee its duration over time. The metal frames, following a total cleaning of the surface, pass through chemical conversion processes, creating a compact base that allows for better adhesion of the subsequent treatment. In the last phase the object subjected to the powder coating process is placed in a polymerization oven, going to form an adherent and extremely tight layer durable. This particular paint job is ideal for outdoor use.

To clean the surface, use a damp microfiber cloth with neutral soap or specific metal cleaning products. Avoid hitting or rubbing the surface with sharp objects. Do not use scourers or other abrasive materials, since they would inevitably scratch the surface. Do not leave rusty iron objects on the surface for too long.

These surface treatments are not suitable for outdoor use, but they guarantee excellent resistance to frequent use, dirt and dust.