

# MIDJ



## Calla S M\_T PP Chair

design Fabrizio Batoni, 2019

Calla stackable chair with sled base in steel. Polypropylene seat. The version with painted base in matt finish and polypropylene seat is suitable for outdoor use. Optional: cushion covered in leather, faux leather or fabric, for indoor use only. The chair can be equipped with a hook to create rows of chairs aligned perfectly.

Essential in small spaces, surprisingly lively in conference rooms with the seats connected by the spacer hook.

### Colors and Materials

#### Structure



White steel



Sand steel



Pastel yellow steel



Grafite metal



Black steel



Light blue metal



Ocean blue steel



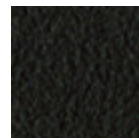
Bronze metal



Fango steel



Light grey steel



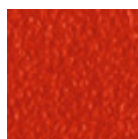
Brown steel



Ocher steel



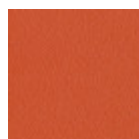
Facepowder pink metal



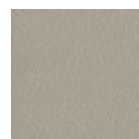
Red steel



Sage green metal



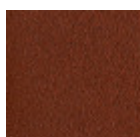
Papaya orange steel



Ash grey metal



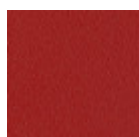
Golden yellow metal



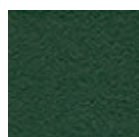
Bulgaro red metal



Pine green steel



Cherry red metal



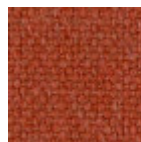
Dark green metal

#### Coating

## Polipropilene

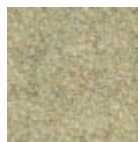
10 Colors

### Backrest



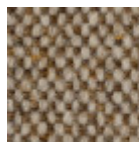
**Cotton Club fabric**

14 Colors



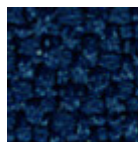
**Fenix Wool fabric**

16 Colors



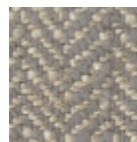
**Main Line Flax fabric**

16 Colors



**Mirage fabric**

15 Colors



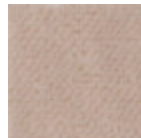
**Second fabric**

11 Colors



**Visual fabric**

13 Colors



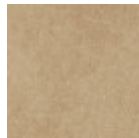
**Velvet Superb**

15 Colors



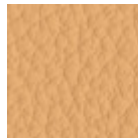
**Secret faux leather**

23 Colors



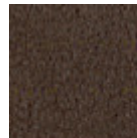
**Vintage faux leather**

12 Colors



**Fiore leather**

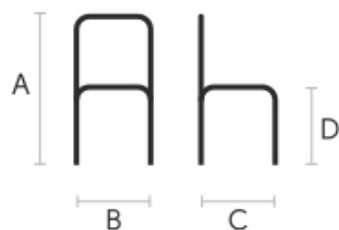
21 Colors



**Vintage leather**

8 Colors

### Dimensions



A (cm)	B (cm)	C (cm)	D (cm)
(inch)	(inch)	(inch)	(inch)
78	51	53	46
30,7	20,1	20,9	18,1

### Volumetric Details

**Weight** 6 Kg

**Volume** 0.15 mc

**Package** 1

**Stackable** 4 pieces

### Materials Certifications

#### Dark green metal

The technologies used in the previous phase of powder coating play a fundamental role in the final result of the processing. They are in fact essential to increase adherence paint on the metal surface and then guarantee its duration over time. The metal frames, following a total cleaning of the surface, pass through chemical conversion processes, creating a compact base that allows for better adhesion of the subsequent treatment. In the last phase the object subjected to the powder coating process is placed in a polymerization oven, going to form an adherent and extremely tight layer durable. This particular paint job is ideal for outdoor use.

To clean the surface, use a damp microfiber cloth with neutral soap or specific metal cleaning products. Avoid hitting or rubbing the surface with sharp objects. Do not use scourers or other abrasive materials, since they would inevitably scratch the surface. Do not leave rusty iron objects on the surface for too long.

These surface treatments are not suitable for outdoor use, but they guarantee excellent resistance to frequent use, dirt and dust.

### Materials Certifications

#### Polipropilene

Il polipropilene è un materiale plastico resistente, atossico, inodore, termoresistente e facile da pulire. Adatto anche all'uso all'aria aperta, è ideale per essere impiegato nel mondo dell'arredamento. Il nostro polipropilene è un materiale rinforzato con fibra di vetro: un'opzione dalle ottime proprietà meccaniche che permette all'articolo di essere solido e resistente. Questo materiale presenta una spiccata resistenza allo scolorimento: un trattamento con stabilizzatore UV e protezione antistatica AS lavora per prolungare la bellezza del prodotto rallentando il processo di sbiadimento. Esponendo tuttavia la sedia al sole e agli agenti atmosferici per periodi molto lunghi, il colore può subire alterazioni. In quanto materiale

termoplastico è riciclabile al 100%.

#### PULIZIA E MANUTENZIONE

Le sedute in polipropilene sono di facile manutenzione e non richiedono l'impiego di prodotti specifici, se non in caso di macchie ostinate e difficili da rimuovere.

Per una pulizia semplice ed efficace utilizzare un panno in microfibra imbevuto d'acqua o di una soluzione di acqua e sapone neutro. Se sono presenti macchie difficili da rimuovere è possibile agire direttamente su di esse con un detergente neutro, sempre con l'ausilio di un panno in microfibra. Risciacquare poi con acqua. Evitare spugne abrasive, smacchiatori e detersivi granulari che potrebbero graffiare la superficie. Se si utilizza un detergente a base di cloro, risciacquare e non asciugare alla luce diretta del sole.

Questi consigli sono raccomandazioni di pulizia e manutenzione, e non garantiscono una completa rimozione delle macchie.

Consigliamo di testare sempre il metodo di pulizia su una parte nascosta dell'articolo per verificare la resistenza del colore.

I campioni colore sono da considerarsi indicativi per ciascun prodotto. Leggere differenze di colore tra una partita e l'altra sono da considerarsi normali.