



Ola H75 M Stool

design Paolo Vernier, 2016

Ola stool with laquered metal frame and shell, suitable for outdoor use.

It is stackable up to four units.

Height: 75 cm

Colors and Materials

Structure



White steel



Sand steel



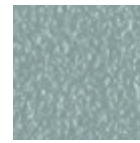
Pastel yellow steel



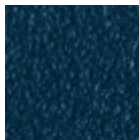
Grafite steel



Black steel



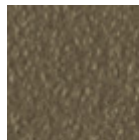
Light blue steel



Ocean blue steel



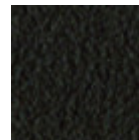
Bronze Steel



Fango steel



Light grey steel



Brown steel



Ocher steel



Facepowder pink steel



Red steel

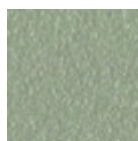


Sage green steel

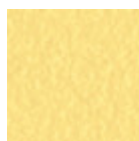
Coating



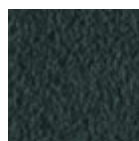
White steel



Sand steel



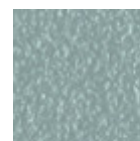
Pastel yellow steel



Grafite steel



Black steel



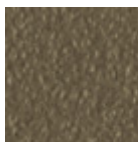
Light blue steel



Ocean blue steel



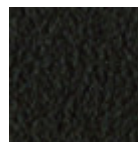
Bronze Steel



Fango steel



Light grey steel



Brown steel



Ocher steel



Facepowder pink steel

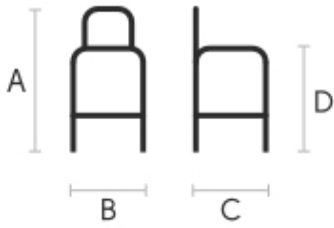


Red steel



Sage green steel

Dimensions



	cm	inch
A	100	39.4
B	50	19.7
C	52	20.1
D	75	29.5

Volumetric Details

Weight 9 Kg

Volume 0.28 mc

Package 1