

# MIDJ



## Square 4G H107 Bistro Table

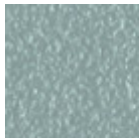
design Balutto Associati, 2018

Bistrot base with four-ways steel base suitable for outdoor use.

Suitable for round and square tops:  $\varnothing 60$ ,  $\varnothing 70$ ,  $\varnothing 80$ , 60x60, 70x70, 75x75, 80x80.

### Colors and Materials

#### Structure



Light blue metal



White steel



Ocean blue steel



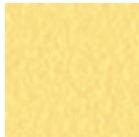
Bronze metal



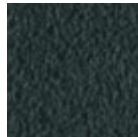
Sand steel



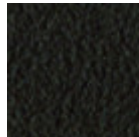
Fango steel



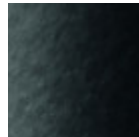
Pastel yellow steel



Grafite metal



Brown steel



Black steel



Ocher steel



Facepowder pink metal

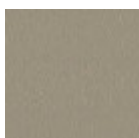


Red steel



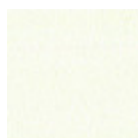
Sage green metal

#### Top

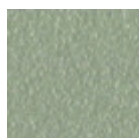


Melamine

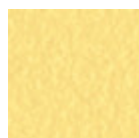
4 Colors



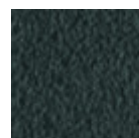
White steel



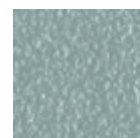
Sand steel



Pastel yellow steel



Grafite metal



Light blue metal



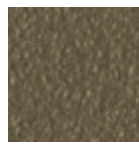
Black steel



Ocean blue steel



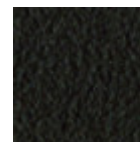
Bronze metal



Fango steel



Light grey steel



Brown steel



Ocher steel



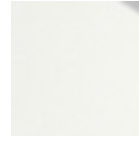
Facepowder pink metal



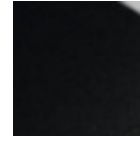
Red steel



Sage green metal



White hpl black core



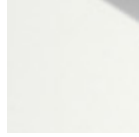
Black hpl



Hpl cemento

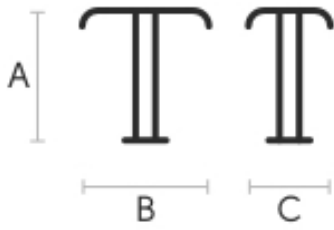


Hpl corten



White hpl white core

## Dimensions



A (cm)	B (cm)	C (cm)
107	55	55
42.1	21.7	21.7

## Volumetric Details

Weight 7 Kg

Volume 0.34 mc

Package 1