

MIDJ



Forest oval Table

design Beatriz Sempere, 2017

Forest fixed elliptical table with laquered metal legs.

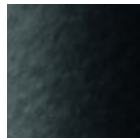
Top is available in veneered wood, marble or crystalceramic in different variations with glossy and mat finish.

Colors and Materials

Structure



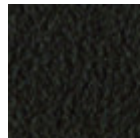
White steel



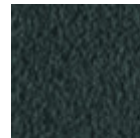
Black steel



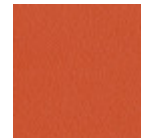
Sand steel



Brown steel



Grafite metal



Papaya orange steel



Light blue metal



Ocean blue steel



Bronze metal



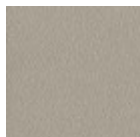
Fango steel



Golden yellow metal



Pastel yellow steel



Ash grey metal



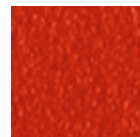
Light grey steel



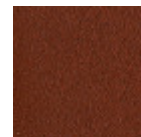
Ocher steel



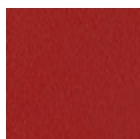
Facepowder pink metal



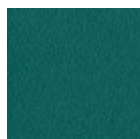
Red steel



Bulgaro red metal



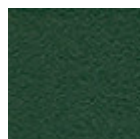
Cherry red metal



Pine green steel

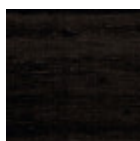


Sage green metal

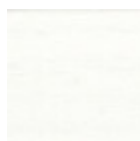


Dark green metal

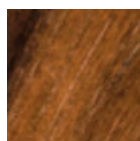
Top



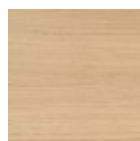
Black lacquered veneered ash



White lacquered veneered ash



Veneered flamed walnut



Natural oak veneered



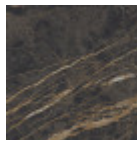
Glossy white calacatta marble crystalceramic



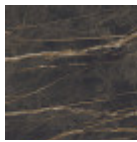
Matt calacatta marble crystalceramic



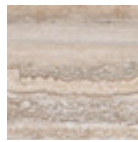
Glossy greek black marble crystalceramic



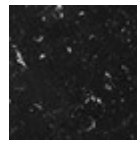
Noir desir matt marble crystalceramic



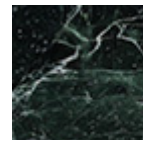
Noir desir glossy marble crystalceramic



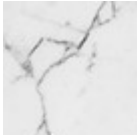
Beige travertino romano marble
1 color



Black marquiña marble
1 color



Green tinos marble
1 color



White calacatta vagli marble
1 color

Dimensions



A (cm)	B (cm)	C (cm)
(inch)	(inch)	(inch)
76	280	120
29.9	110,2	47.2

Volumetric Details

Weight 137 Kg
Volume 1.87 mc
Package 4

Materials Certifications

Dark green metal

The technologies used in the previous phase of powder coating play a fundamental role in the final result of the processing. They are in fact essential to increase adherence paint on the metal surface and then guarantee its duration over time. The metal frames, following a total cleaning of the surface, pass through chemical conversion processes, creating a compact base that allows for better adhesion of the subsequent treatment. In the last phase the object subjected to the powder coating process is placed in a polymerization oven, going to form an adherent and extremely tight layer durable. This particular paint job is ideal for outdoor use.

To clean the surface, use a damp microfiber cloth with neutral soap or specific metal cleaning products. Avoid hitting or rubbing the surface with sharp objects. Do not use scourers or other abrasive materials, since they would inevitably scratch the surface. Do not leave rusty iron objects on the surface for too long.

These surface treatments are not suitable for outdoor use, but they guarantee excellent resistance to frequent use, dirt and dust.

Materials Certifications

Black lacquered veneered ash

Veneered woods are the result of a process of gluing extremely thin sheets of wood applied to various types of supports to produce furnishing elements, which have a similar appearance to solid wood, but with better performance in terms of resistance to woodworms, lightness and greater stability over time.

If exposed to light, and in any case with the passage of time, the color of the veneer changes. It may happen that furniture of the same color purchased after some time, show color differences. Upon request, the veneered parts can be supplied with certified origin from forests managed in a correct and responsible manner, according to the rigorous environmental standards established by the FSC circuit.

CLEANING AND MAINTENANCE

For ordinary cleaning of veneered woods, use a cloth moistened with neutral soap well diluted in water or specific products. Always dry after each application with a dry cloth or paper towel. Do not use abrasive products. In case of accidental spills of substances or liquids, immediately dab the wood with paper towel or with a dry and clean cloth. Avoid proximity to heat sources. Evenly expose the veneered woods to light,

for example by periodically opening the table extensions that are stored inside the structure, or by moving any object placed on the surface, such as vases and accessories.

These tips are cleaning recommendations and do not guarantee complete stain removal.

We recommend that you always test the cleaning method on a hidden part of the item to check the resistance of the color.

Colour samples are to be considered approximate for each product. Slight color differences between a lot and the other are to be considered normal.

Materials Certifications

White lacquered veneered ash

Veneered woods are the result of a process of gluing extremely thin sheets of wood applied to various types of supports to produce furnishing elements, which have a similar appearance to solid wood, but with better performance in terms of resistance to woodworms, lightness and greater stability over time.

If exposed to light, and in any case with the passage of time, the color of the veneer changes. It may happen that furniture of the same color purchased after some time, show color differences. Upon request, the veneered parts can be supplied with certified origin from forests managed in a correct and responsible manner, according to the rigorous environmental standards established by the FSC circuit.

CLEANING AND MAINTENANCE

For ordinary cleaning of veneered woods, use a cloth moistened with neutral soap well diluted in water or specific products. Always dry after each application with a dry cloth or paper towel. Do not use abrasive products. In case of accidental spills of substances or liquids, immediately dab the wood with paper towel or with a dry and clean cloth. Avoid proximity to heat sources. Evenly expose the veneered woods to light, for example by periodically opening the table extensions that are stored inside the structure, or by moving any object placed on the surface, such as vases and accessories.

These tips are cleaning recommendations and do not guarantee complete stain removal.

We recommend that you always test the cleaning method on a hidden part of the item to check the resistance of the color.

Colour samples are to be considered approximate for each product. Slight color differences between a lot and the other are to be considered normal.

Materials Certifications

Veneered flamed walnut

Veneered woods are the result of a process of gluing extremely thin sheets of wood applied to various types of supports to produce furnishing elements, which have a similar appearance to solid wood, but with better performance in terms of resistance to woodworms, lightness and greater stability over time.

If exposed to light, and in any case with the passage of time, the color of the veneer changes. It may happen that furniture of the same color purchased after some time, show color differences. Upon request, the veneered parts can be supplied with certified origin from forests managed in a correct and responsible manner, according to the rigorous environmental standards established by the FSC circuit.

CLEANING AND MAINTENANCE

For ordinary cleaning of veneered woods, use a cloth moistened with neutral soap well diluted in water or specific products. Always dry after each application with a dry cloth or paper towel. Do not use abrasive products. In case of accidental spills of substances or liquids, immediately dab the wood with paper towel or with a dry and clean cloth. Avoid proximity to heat sources. Evenly expose the veneered woods to light, for example by periodically opening the table extensions that are stored inside the structure, or by moving any object placed on the surface, such as vases and accessories.

These tips are cleaning recommendations and do not guarantee complete stain removal.

We recommend that you always test the cleaning method on a hidden part of the item to check the resistance of the color.

Colour samples are to be considered approximate for each product. Slight color differences between a lot and the other are to be considered normal.

Materials Certifications

Natural oak veneered

Veneered woods are the result of a process of gluing extremely thin sheets of wood applied to various types of supports to produce furnishing elements, which have a similar appearance to solid wood, but with better performance in terms of resistance to woodworms, lightness and greater stability over time. If exposed to light, and in any case with the passage of time, the color of the veneer changes. It may happen that furniture of the same color purchased after some time, show color differences. Upon request, the veneered parts can be supplied with certified origin from forests managed in a correct and responsible manner, according to the rigorous environmental standards established by the FSC circuit.

CLEANING AND MAINTENANCE

For ordinary cleaning of veneered woods, use a cloth moistened with neutral soap well diluted in water or specific products. Always dry after each application with a dry cloth or paper towel. Do not use abrasive products. In case of accidental spills of substances or liquids, immediately dab the wood with paper towel or with a dry and clean cloth. Avoid proximity to heat sources. Evenly expose the veneered woods to light, for example by periodically opening the table extensions that are stored inside the structure, or by moving any object placed on the surface, such as vases and accessories.

These tips are cleaning recommendations and do not guarantee complete stain removal.

We recommend that you always test the cleaning method on a hidden part of the item to check the resistance of the color.

Colour samples are to be considered approximate for each product. Slight color differences between a lot and the other are to be considered normal.

Materials Certifications

Glossy white calacatta marble crystalceramic

Crystalceramic combines elegance and resistance. Crystalceramic tops are composed of two sheets joined together: the lower layer is made of tempered glass, the upper layer of ceramic (porcelain stoneware).

Once joined together, the sheets give life to an extremely resistant top, suitable for placement in highly used environments. The properties that the crystalceramic tops include are high water repellency, heat resistance, scratch resistance and high durability.

CLEANING AND MAINTENANCE

For daily cleaning we recommend using a microfiber cloth, moistened with hot water and possibly neutral detergents, making sure to rinse them in case of use. Do not use abrasive scourers or cleaners. To remove any dried residues deposited on the surface, proceed with the use of a wooden or plastic scraper. Some types of stains, if not promptly removed, could leave a more or less visible permanent ring. In case of contact with acidic liquids (such as pure lemon juice) or highly pigmented liquids (such as red wine, coffee, Coke) remove promptly and rinse with a damp and clean cloth. The persistence of the stain over time hinders its complete removal. It is possible to use bleach to remove the most stubborn stains: with a damp cloth rub the surface for a few seconds. Most of the stains will no longer be visible within 2-3 minutes of application, then rinse with water and dry.

These tips are cleaning recommendations and do not guarantee complete stain removal.

We recommend that you always test the cleaning method on a hidden part of the item to check the resistance of the material.

Colour samples are to be considered approximate for each product. Slight color differences between a lot and the other are to be considered normal.

Materials Certifications

Matt calacatta marble crystalceramic

Crystalceramic combines elegance and resistance. Crystalceramic tops are composed of two sheets joined together: the lower layer is made of tempered glass, the upper layer of ceramic (porcelain stoneware).

Once joined together, the sheets give life to an extremely resistant top, suitable for placement in highly used environments. The properties that the crystalceramic tops include are high water repellency,

heat resistance, scratch resistance and high durability.

CLEANING AND MAINTENANCE

For daily cleaning we recommend using a microfiber cloth, moistened with hot water and possibly neutral detergents, making sure to rinse them in case of use. Do not use abrasive scourers or cleaners. To remove any dried residues deposited on the surface, proceed with the use of a wooden or plastic scraper. Some types of stains, if not promptly removed, could leave a more or less visible permanent ring. In case of contact with acidic liquids (such as pure lemon juice) or highly pigmented liquids (such as red wine, coffee, Coke) remove promptly and rinse with a damp and clean cloth. The persistence of the stain over time hinders its complete removal. It is possible to use bleach to remove the most stubborn stains: with a damp cloth rub the surface for a few seconds. Most of the stains will no longer be visible within 2-3 minutes of application, then rinse with water and dry.

These tips are cleaning recommendations and do not guarantee complete stain removal.

We recommend that you always test the cleaning method on a hidden part of the item to check the resistance of the material.

Colour samples are to be considered approximate for each product. Slight color differences between a lot and the other are to be considered normal.

Materials Certifications

Glossy greek black marble crystalceramic

Crystalceramic combines elegance and resistance. Crystalceramic tops are composed of two sheets joined together: the lower layer is made of tempered glass, the upper layer of ceramic (porcelain stoneware).

Once joined together, the sheets give life to an extremely resistant top, suitable for placement in highly used environments. The properties that the crystalceramic tops include are high water repellency, heat resistance, scratch resistance and high durability.

CLEANING AND MAINTENANCE

For daily cleaning we recommend using a microfiber cloth, moistened with hot water and possibly neutral detergents, making sure to rinse them in case of use. Do not use abrasive scourers or cleaners. To remove any dried residues deposited on the surface, proceed with the use of a wooden or plastic scraper. Some types of stains, if not promptly removed, could leave a more or less visible permanent ring. In case of contact with acidic liquids (such as pure lemon juice) or highly pigmented liquids (such as red wine, coffee, Coke) remove promptly and rinse with a damp and clean cloth. The persistence of the stain over time hinders its complete removal. It is possible to use bleach to remove the most stubborn stains: with a damp cloth rub the surface for a few seconds. Most of the stains will no longer be visible within 2-3 minutes of application, then rinse with water and dry.

These tips are cleaning recommendations and do not guarantee complete stain removal.

We recommend that you always test the cleaning method on a hidden part of the item to check the resistance of the material.

Colour samples are to be considered approximate for each product. Slight color differences between a lot and the other are to be considered normal.

Materials Certifications

Noir desir matt marble crystalceramic

Ceramic tops give life to an extremely resistant top, suitable for placement in highly used environments. The properties that the ceramic tops include are high water repellency, heat resistance, scratch resistance and high durability.

CLEANING AND MAINTENANCE

For daily cleaning we recommend using a microfiber cloth, moistened with hot water and possibly neutral detergents, making sure to rinse them in case of use. Do not use abrasive scourers or cleaners. To remove any dried residues deposited on the surface, proceed with the use of a wooden or plastic scraper. Some types of stains, if not promptly removed, could leave a more or less visible permanent ring. In case of contact with acidic liquids (such as pure lemon juice) or highly pigmented liquids (such as red wine, coffee, Coke) remove promptly and rinse with a damp and clean cloth. The persistence of the stain over time hinders its complete removal. It is possible to use bleach to remove the most stubborn stains: with a damp cloth rub the surface for a few seconds. Most of the stains will no longer be visible

within 2-3 minutes of application, then rinse with water and dry.
These tips are cleaning recommendations and do not guarantee complete stain removal.
We recommend that you always test the cleaning method on a hidden part of the item to check the resistance of the material.

Colour samples are to be considered approximate for each product. Slight color differences between a lot and the other are to be considered normal.

Materials Certifications

Noir desir glossy marble crystalceramic

Crystalceramic combines elegance and resistance. Crystalceramic tops are composed of two sheets joined together: the lower layer is made of tempered glass, the upper layer of ceramic (porcelain stoneware).

Once joined together, the sheets give life to an extremely resistant top, suitable for placement in highly used environments. The properties that the crystalceramic tops include are high water repellency, heat resistance, scratch resistance and high durability.

CLEANING AND MAINTENANCE

For daily cleaning we recommend using a microfiber cloth, moistened with hot water and possibly neutral detergents, making sure to rinse them in case of use. Do not use abrasive scourers or cleaners. To remove any dried residues deposited on the surface, proceed with the use of a wooden or plastic scraper. Some types of stains, if not promptly removed, could leave a more or less visible permanent ring. In case of contact with acidic liquids (such as pure lemon juice) or highly pigmented liquids (such as red wine, coffee, Coke) remove promptly and rinse with a damp and clean cloth. The persistence of the stain over time hinders its complete removal. It is possible to use bleach to remove the most stubborn stains: with a damp cloth rub the surface for a few seconds. Most of the stains will no longer be visible within 2-3 minutes of application, then rinse with water and dry.

These tips are cleaning recommendations and do not guarantee complete stain removal.

We recommend that you always test the cleaning method on a hidden part of the item to check the resistance of the material.

Colour samples are to be considered approximate for each product. Slight color differences between a lot and the other are to be considered normal.

Materials Certifications

Beige travertino romano marble

Marble is a limestone rock that has taken on a crystalline structure, capable of acquiring a good smoothing and polishing, following a skillful processing.

The natural components of the rock (quartz, graphite, iron hydroxide, etc.) can give different colors and appearance, which determine the different type of marble. We have selected marbles of the most prestigious

Italian, Greek and Spanish origin. Each marble top is unique and unrepeatable: the block from which the slabs are obtained shows colors influenced by mineral substances present in nature. For this reason, it is impossible to obtain identical slabs. As a natural material, worked with procedures that maintain its quality, it is possible to observe distinctive

traits such as veins, slight surface irregularities, small holes and pigmented colors of various types, that make the material unique and inimitable and do not compromise its quality or structural seal.

CLEANING AND MAINTENANCE

For regular cleaning, use a soft microfiber cloth ampended with water or with a solution of water and neutral soap. In case of stains, it is possible to apply specific products for marble cleaning, taking care to always dry the surface with a clean cloth or a sheet of absorbent paper. Some types of stains, if not promptly removed, could leave a more or less visible ring. To preserve the beauty of the material, we recommend not pouring acidic substances, such as carbonated or alcoholic drinks, lemon juice, wine, coffee, tea or vinegar, on the marble tops. In case of contact, act promptly by removing them completely, and then rinsing the surface with a soft cloth moistened with water in order not to let liquids penetrate the pores. The persistence of the stain over time hinders its complete removal. Do not use abrasive sponges or cleaners, ammonia, bleach or acids.

These tips are cleaning recommendations and do not guarantee complete stain removal.

We recommend that you always test the cleaning method on a hidden part of the item to check the

resistance of the material.

Colour samples are to be considered approximate for each product. Slight color differences between a lot and the other are to be considered normal.

Materials Certifications

Black marquiña marble

Marble is a limestone rock that has taken on a crystalline structure, capable of acquiring a good smoothing and polishing, following a skillful processing.

The natural components of the rock (quartz, graphite, iron hydroxide, etc.) can give different colors and appearance, which determine the different type of marble. We have selected marbles of the most prestigious

Italian, Greek and Spanish origin. Each marble top is unique and unrepeatably: the block from which the slabs are obtained shows colors influenced by mineral substances present in nature. For this reason, it is impossible to obtain identical slabs. As a natural material, worked with procedures that maintain its quality, it is possible to observe distinctive

traits such as veins, slight surface irregularities, small holes and pigmented colors of various types, that make the material unique and inimitable and do not compromise its quality or structural seal.

CLEANING AND MAINTENANCE

For regular cleaning, use a soft microfiber cloth dampened with water or with a solution of water and neutral soap. In case of stains, it is possible to apply specific products for marble cleaning, taking care to always dry the surface with a clean cloth or a sheet of absorbent paper. Some types of stains, if not promptly removed, could leave a more or less visible ring. To

preserve the beauty of the material, we recommend not pouring acidic substances, such as carbonated or alcoholic drinks, lemon juice, wine, coffee, tea or vinegar, on the marble tops. In case of contact, act promptly by removing them completely, and then rinsing the surface with a soft cloth moistened with water in order not to let liquids penetrate the pores. The persistence of the stain over time hinders its complete removal. Do not use abrasive sponges or cleaners, ammonia, bleach or acids.

These tips are cleaning recommendations and do not guarantee complete stain removal.

We recommend that you always test the cleaning method on a hidden part of the item to check the resistance of the material.

Colour samples are to be considered approximate for each product. Slight color differences between a lot and the other are to be considered normal.

Materials Certifications

Green tinos marble

Marble is a limestone rock that has taken on a crystalline structure, capable of acquiring a good smoothing and polishing, following a skillful processing.

The natural components of the rock (quartz, graphite, iron hydroxide, etc.) can give different colors and appearance, which determine the different type of marble. We have selected marbles of the most prestigious

Italian, Greek and Spanish origin. Each marble top is unique and unrepeatably: the block from which the slabs are obtained shows colors influenced by mineral substances present in nature. For this reason, it is impossible to obtain identical slabs. As a natural material, worked with procedures that maintain its quality, it is possible to observe distinctive

traits such as veins, slight surface irregularities, small holes and pigmented colors of various types, that make the material unique and inimitable and do not compromise its quality or structural seal.

CLEANING AND MAINTENANCE

For regular cleaning, use a soft microfiber cloth dampened with water or with a solution of water and neutral soap. In case of stains, it is possible to apply specific products for marble cleaning, taking care to always dry the surface with a clean cloth or a sheet of absorbent paper. Some types of stains, if not promptly removed, could leave a more or less visible ring. To

preserve the beauty of the material, we recommend not pouring acidic substances, such as carbonated or alcoholic drinks, lemon juice, wine, coffee, tea or vinegar, on the marble tops. In case of contact, act promptly by removing them completely, and then rinsing the surface with a soft cloth moistened with water in order not to let liquids penetrate the pores. The persistence of the stain over time hinders its complete removal. Do not use abrasive sponges or cleaners, ammonia, bleach or acids.

These tips are cleaning recommendations and do not guarantee complete stain removal.

We recommend that you always test the cleaning method on a hidden part of the item to check the

resistance of the material.

Colour samples are to be considered approximate for each product. Slight color differences between a lot and the other are to be considered normal.

Materials Certifications

White calacatta vagli marble

Marble is a limestone rock that has taken on a crystalline structure, capable of acquiring a good smoothing and polishing, following a skillful processing.

The natural components of the rock (quartz, graphite, iron hydroxide, etc.) can give different colors and appearance, which determine the different type of marble. We have selected marbles of the most prestigious

Italian, Greek and Spanish origin. Each marble top is unique and unrepeatable: the block from which the slabs are obtained shows colors influenced by mineral substances present in nature. For this reason, it is impossible to obtain identical slabs. As a natural material, worked with procedures that maintain its quality, it is possible to observe distinctive

traits such as veins, slight surface irregularities, small holes and pigmented colors of various types, that make the material unique and inimitable and do not compromise its quality or structural seal.

CLEANING AND MAINTENANCE

For regular cleaning, use a soft microfiber cloth dampened with water or with a solution of water and neutral soap. In case of stains, it is possible to apply specific products for marble cleaning, taking care to always dry the surface with a clean cloth or a sheet of absorbent paper. Some types of stains, if not promptly removed, could leave a more or less visible ring. To

preserve the beauty of the material, we recommend not pouring acidic substances, such as carbonated or alcoholic drinks, lemon juice, wine, coffee, tea or vinegar, on the marble tops. In case of contact, act promptly by removing them completely, and then rinsing the surface with a soft cloth moistened with water in order not to let liquids penetrate the pores. The persistence of the stain over time hinders its complete removal. Do not use abrasive sponges or cleaners, ammonia, bleach or acids.

These tips are cleaning recommendations and do not guarantee complete stain removal.

We recommend that you always test the cleaning method on a hidden part of the item to check the resistance of the material.

Colour samples are to be considered approximate for each product. Slight color differences between a lot and the other are to be considered normal.