



Alexander Extendable Table

design Midj R&D, 2018

Extendable table with four legs base in lacquered steel. Top in antiscratch glass or crystalceramic.

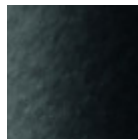


Colors and Materials

Structure



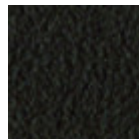
White Steel



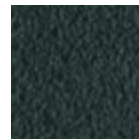
Black Steel



Sand Steel

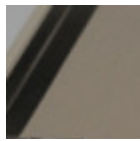


Brown Steel



Grafite Steel

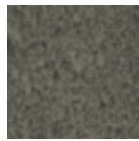
Coating



Matt Sand Antiscratch Glass



Matt Graphite Antiscratch Glass



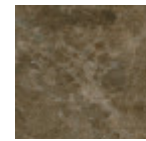
Lead Crystalceramic



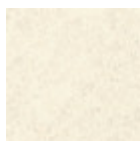
Charcoal Savoia Crystalceramic



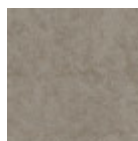
Cement Savoia Crystalceramic



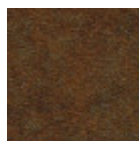
Emperador Marble Crystalceramic



Oxide White Crystalceramic



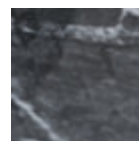
Oxide Sand Crystalceramic



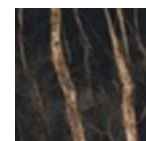
Corten Crystalceramic



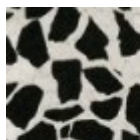
Crystalceramic with effect calacatta marble



Cristalceramica Marmo Greco Nero Lucido

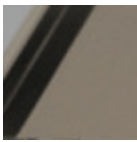


Cristalceramica Marmo Noir Desir

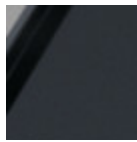


Cristalceramica veneziano

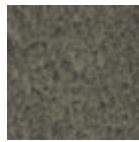
Extensions



**Matt Sand
Antiscratch Glass**



**Matt Graphite
Antiscratch Glass**



Lead Crystalceramic



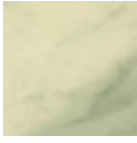
**Charcoal Savoia
Crystalceramic**



**Cement Savoia
Crystalceramic**



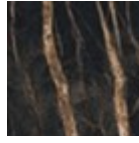
**Emperador Marble
Crystalceramic**



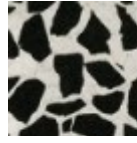
**Crystalceramic with
effect calacatta
marble**



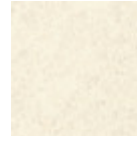
**Crystalceramic
Glossy Black Greek
Marble**



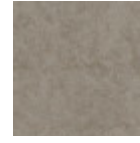
**Crystalceramic with
effect noir desir
marble**



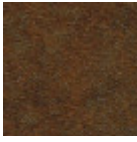
**Venetian
crystalceramic**



**Oxide White
Crystalceramic**



**Oxide Sand
Crystalceramic**



**Corten
Crystalceramic**

Dimensions

Dimensions

Volumetric Details

Weight 136 Kg

Volume 0.75 mc

Package 4

Image not found or type unknown

	A	B	C	D
	(cm)	(cm)	(cm)	(cm)
	(inch)	(inch)	(inch)	(inch)
160/240x90	75	160	90	240
(cm)	29.5	63	35.4	94.5
	(inch)			
200/300x100	76	200	100	300
(cm)	29.9	78.7	39.4	118.1
	(inch)			

Downloads

3ds extendable Alexander (zip) - <https://www.midj.com/images/uploads/resources/3d-midj-alexander-ext-3ds.zip>