

MIDJ



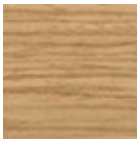
Strike S H75 L Stool

design AtelierNanni, 2017

Strike fixed stool with wooden frame and backrest in lacquered metal.
Height: 75 cm

Colors and Materials

Structure



Lacquered ash

11 Colors

Coating



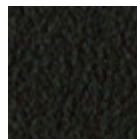
White steel



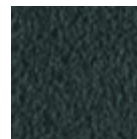
Black steel



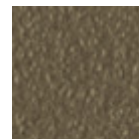
Sand steel



Brown steel



Grafite metal



Fango steel



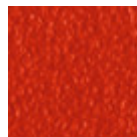
Bronze metal



Pastel yellow steel



Ocher steel



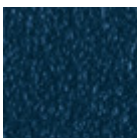
Red steel



Sage green metal



Light blue metal



Ocean blue steel

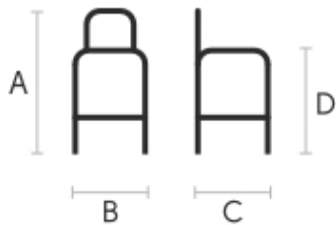


Light grey steel



Facepowder pink
metal

Dimensions



Volumetric Details

Weight 8 Kg
Volume 0.34 mc
Package 1

Certifications



A (cm)	B (cm)	C (cm)	D (cm)
(inch)	(inch)	(inch)	(inch)
108	54	51	76
42.5	21.3	20.1	29.9

Materials Certifications

Lacquered ash

Ash wood is durable material, with good resistance and flexibility. Thanks to its porosity, it is ideal to be lacquered. Its original color is quite light: it can range from light blond, to pink and pale brown, with possible shades of green. In our set of samples, it is available in the natural finish and in numerous color variations: from the classic wood effects to the most pop colors of the moment. The ash used for our materials is European.

CLEANING AND MAINTENANCE

Ash is an easy-to-clean wood: to remove dust or light stains, rub the surface with a soft cloth, if necessary moistened in a solution of hot water or white vinegar, to help eliminate stains without altering the beauty and shine of the wood. Always dry the surface. In addition, you can choose to use specific products for wooden furniture.

These tips are cleaning recommendations and do not guarantee complete stain removal. We recommend that you always test the cleaning method on a hidden part of the item to check the resistance of the color.

Colour samples are to be considered approximate for each product. Slight color differences between a lot and the other are to be considered normal.