

MIDJ



Trampoliere OUT H65 / H75 Stool

design Roberto Paoli, 2013

Trampoliere stool with four legs in lacquered steel is available in two different heights: 65 cm (25.6 in) and 75 cm (29.5 in).

The stool is stackable up to four units and suitable for outdoor use.

Optional: removable cushion for seating and backrest with lines upholstered in leather, faux leather, fabric.

Colors and Materials

Structure



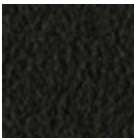
White steel



Black steel



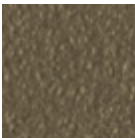
Sand steel



Brown steel



Grafite metal



Fango steel



Bronze metal



Pastel yellow steel



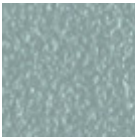
Ocher steel



Red steel



Sage green metal



Light blue metal



Ocean blue steel



Light grey steel



Facepowder pink metal

Dimensions



A	B	C
(cm)	(cm)	(cm)
(inch)	(inch)	(inch)

H65 (cm) <small>(inch)</small>	76 29.9	46 18.1	42 16.5	65 25.6
H75 (cm) <small>(inch)</small>	86 33.9	46 18.1	42 16.5	75 29.5

Volumetric Details

Weight 8.1 Kg
Volume 0.2 mc
Package 1
Stackable 4 pieces