

MIDJ



Trampoliere OUT S M Chair

design Roberto Paoli, 2013

Trampoliere chair with four legs base in lacquered steel is stackable up to four pieces and suitable for outdoor use.

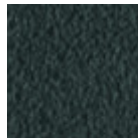
Optional: removable pillow for seat and backrest upholstered with lines in leather, faux leather or fabric - for indoor use only.

Colors and Materials

Structure



White steel



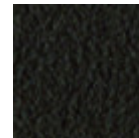
Grafite metal



Black steel



Sand steel



Brown steel



Pastel yellow steel



Light blue metal



Fango steel



Red steel



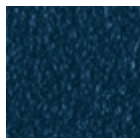
Bronze metal



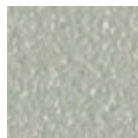
Ocher steel



Sage green metal



Ocean blue steel

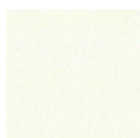


Light grey steel

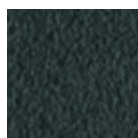


Facepowder pink
metal

Coating



White steel



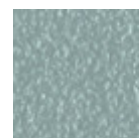
Grafite metal



Black steel



Pastel yellow steel

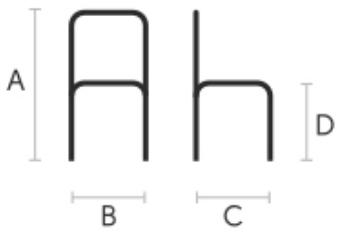


Light blue metal



Red steel

Dimensions



Volumetric Details

Weight 6.5 Kg
Volume 0.32 mc
Package 1

Certifications



CATAS
EN 1728

A (cm) (inch)	B (cm) (inch)	C (cm) (inch)	D (cm) (inch)
77	46	52	46
30.3	18.1	20.5	18.1