



Passepartout S M LG_M Chair

design Midj R&D, 2013

Stakable chair with four leg frame in chrome or lacquered steel. Shell in wood finish dark oak or light oak.

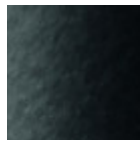


Colors and Materials

Structure



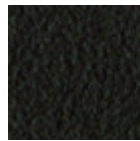
White Steel



Black Steel



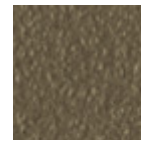
Sand Steel



Brown Steel



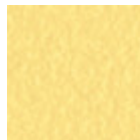
Grafite Steel



Fango Steel



Bronze Steel



Pastel Yellow Steel



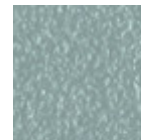
Ocher Steel



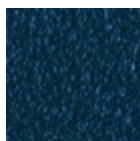
Red steel



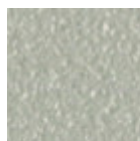
Sage Green Steel



Light blue steel



Ocean Blue Steel



Light Grey Steel

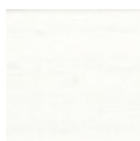


Facepowder Pink
Steel

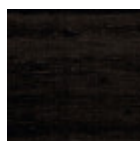


Chrome

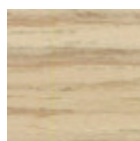
Coating



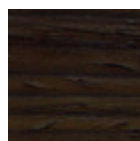
White lacquered
veneered wood



Black lacquered
veneered wood



Veneered wood
natural finish



Veneered wood dark
oak

Dimensions

Volumetric Details

Weight 6.5 Kg

Volume 0.25 mc

Package 1

Image not found or type unknown

	cm	inch
A	81	31.9
B	45	17.7
C	54	21.3
D	46	18.1

Downloads

3D Passepartout S (zip) - <https://www.midj.com/images/uploads/resources/passepartout-s-3d.zip>